

Product datasheet for **TA343271**

PLAUR Rabbit Polyclonal Antibody

Product data:

Product Type:	Primary Antibodies
Applications:	WB
Recommended Dilution:	WB
Reactivity:	Human
Host:	Rabbit
Isotype:	IgG
Clonality:	Polyclonal
Immunogen:	The immunogen for anti-PLAUR antibody is: synthetic peptide directed towards the N-terminal region of PLAUR. Synthetic peptide located within the following region: ELELVEKSCETHSEKTNRTLSYRTGLKITSLEVCGLDLCNQGNSGRAVT
Formulation:	Liquid. Purified antibody supplied in 1x PBS buffer with 0.09% (w/v) sodium azide and 2% sucrose. <i>Note that this product is shipped as lyophilized powder to China customers.</i>
Conjugation:	Unconjugated
Storage:	Store at -20°C as received.
Stability:	Stable for 12 months from date of receipt.
Predicted Protein Size:	37 kDa
Gene Name:	plasminogen activator, urokinase receptor
Database Link:	NP_002650 Entrez Gene 5329 Human Q03405



[View online »](#)

Background:

This gene encodes the receptor for urokinase plasminogen activator and, given its role in localizing and promoting plasmin formation, likely influences many normal and pathological processes related to cell-surface plasminogen activation and localized degradation of the extracellular matrix. It binds both the proprotein and mature forms of urokinase plasminogen activator and permits the activation of the receptor-bound pro-enzyme by plasmin. The protein lacks transmembrane or cytoplasmic domains and may be anchored to the plasma membrane by a glycosyl-phosphatidylinositol (GPI) moiety following cleavage of the nascent polypeptide near its carboxy-terminus. However, a soluble protein is also produced in some cell types. Alternative splicing results in multiple transcript variants encoding different isoforms. The proprotein experiences several post-translational cleavage reactions that have not yet been fully defined.

Synonyms:

CD87; U-PAR; UPAR; URKR

Note:

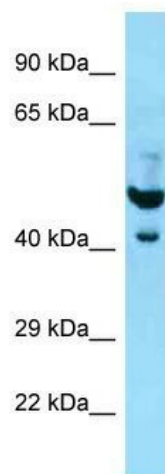
Immunogen Sequence Homology: Human: 100%; Mouse: 82%

Protein Families:

Druggable Genome, Secreted Protein

Protein Pathways:

Complement and coagulation cascades

Product images:

WB Suggested Anti-PLAUR Antibody; Titration: 1.0 ug/ml; Positive Control: HepG2 Whole Cell