

Product datasheet for **TA343269**

PGD Rabbit Polyclonal Antibody

Product data:

Product Type:	Primary Antibodies
Applications:	WB
Recommended Dilution:	WB
Reactivity:	Human
Host:	Rabbit
Isotype:	IgG
Clonality:	Polyclonal
Immunogen:	The immunogen for anti-PGD antibody is: synthetic peptide directed towards the N-terminal region of PGD. Synthetic peptide located within the following region: DFIEKLVPLLDTGDIIDGGNSEYRDTRRCRDLKAKGILFVGSVSGGE
Formulation:	Liquid. Purified antibody supplied in 1x PBS buffer with 0.09% (w/v) sodium azide and 2% sucrose. <i>Note that this product is shipped as lyophilized powder to China customers.</i>
Conjugation:	Unconjugated
Storage:	Store at -20°C as received.
Stability:	Stable for 12 months from date of receipt.
Predicted Protein Size:	53 kDa
Gene Name:	phosphogluconate dehydrogenase
Database Link:	NP_002622 Entrez Gene 5226 Human P52209
Background:	6-phosphogluconate dehydrogenase is the second dehydrogenase in the pentose phosphate shunt. Deficiency of this enzyme is generally asymptomatic, and the inheritance of this disorder is autosomal dominant. Hemolysis results from combined deficiency of 6-phosphogluconate dehydrogenase and 6-phosphogluconolactonase suggesting a synergism of the two enzymopathies.
Synonyms:	6PGD

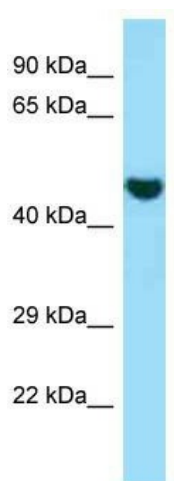


[View online »](#)

Note: Immunogen Sequence Homology: Dog: 100%; Pig: 100%; Rat: 100%; Horse: 100%; Human: 100%; Mouse: 100%; Rabbit: 100%; Zebrafish: 100%; Guinea pig: 100%; Sheep: 93%; Bovine: 93%; Yeast: 85%

Protein Pathways: Glutathione metabolism, Metabolic pathways, Pentose phosphate pathway

Product images:



WB Suggested Anti-PGD Antibody; Titration: 1.0 ug/ml; Positive Control: Jurkat Whole Cell PGD is supported by BioGPS gene expression data to be expressed in Jurkat