

## Product datasheet for **TA343268**

### PGP Rabbit Polyclonal Antibody

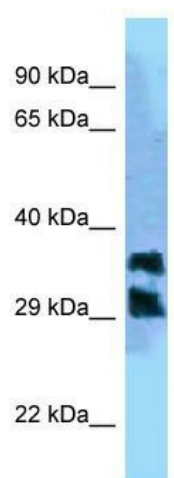
#### Product data:

Product Type:	Primary Antibodies
Applications:	WB
Recommended Dilution:	WB
Reactivity:	Human
Host:	Rabbit
Isotype:	IgG
Clonality:	Polyclonal
Immunogen:	The immunogen for anti-PGP antibody is: synthetic peptide directed towards the C-terminal region of PGP. Synthetic peptide located within the following region: TDILLGATCGLKTLTLTGVSTLGDVKNNQESDCVSKKKMVPDFYVDSIA
Formulation:	Liquid. Purified antibody supplied in 1x PBS buffer with 0.09% (w/v) sodium azide and 2% sucrose. <i>Note that this product is shipped as lyophilized powder to China customers.</i>
Conjugation:	Unconjugated
Storage:	Store at -20°C as received.
Stability:	Stable for 12 months from date of receipt.
Predicted Protein Size:	34 kDa
Gene Name:	phosphoglycolate phosphatase
Database Link:	<a href="#">NP_001035830</a> <a href="#">Entrez Gene 283871 Human</a> <a href="#">A6NDG6</a>
Background:	The function of this protein remains unknown.
Synonyms:	AUM; G3PP; PGPase
Note:	Immunogen Sequence Homology: Human: 100%; Dog: 86%; Pig: 86%; Rat: 86%; Horse: 86%; Guinea pig: 86%; Mouse: 79%; Bovine: 79%
Protein Pathways:	Glyoxylate and dicarboxylate metabolism, Metabolic pathways



[View online »](#)

## Product images:



WB Suggested Anti-PGP Antibody; Titration: 1.0 ug/ml; Positive Control: HepG2 Whole Cell