

## Product datasheet for **TA343267**

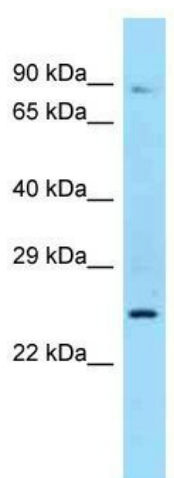
### Sex Hormone Binding Globulin (SHBG) Rabbit Polyclonal Antibody

#### Product data:

Product Type:	Primary Antibodies
Applications:	WB
Recommended Dilution:	WB
Reactivity:	Human
Host:	Rabbit
Isotype:	IgG
Clonality:	Polyclonal
Immunogen:	The immunogen for anti-SHBG antibody is: synthetic peptide directed towards the N-terminal region of Human SHBG. Synthetic peptide located within the following region: FDLTKITKTSSSFVVRTWDPEGVIFYGDTNPKDDWFMGLGRDGRPEIQLH
Formulation:	Liquid. Purified antibody supplied in 1x PBS buffer with 0.09% (w/v) sodium azide and 2% sucrose. <i>Note that this product is shipped as lyophilized powder to China customers.</i>
Purification:	Affinity Purified
Conjugation:	Unconjugated
Storage:	Store at -20°C as received.
Stability:	Stable for 12 months from date of receipt.
Predicted Protein Size:	25 kDa
Gene Name:	sex hormone binding globulin
Database Link:	<a href="#">NP_001031</a> <a href="#">Entrez Gene 6462 Human</a> <a href="#">P04278</a>
Background:	The function of this protein remains unknown.
Synonyms:	ABP; SBP; TEBG
Note:	Immunogen Sequence Homology: Human: 100%; Dog: 93%; Bovine: 93%; Rabbit: 93%; Rat: 86%; Horse: 86%; Mouse: 86%
Protein Families:	Druggable Genome, Secreted Protein



[View online »](#)

**Product images:**

Host: Rabbit; Target Name: SHBG; Sample Tissue: MCF7 Whole Cell lysates; Antibody Dilution: 1.0 ug/ml