

Product datasheet for **TA343266**

Sex Hormone Binding Globulin (SHBG) Rabbit Polyclonal Antibody

Product data:

Product Type:	Primary Antibodies
Applications:	WB
Recommended Dilution:	WB
Reactivity:	Human
Host:	Rabbit
Isotype:	IgG
Clonality:	Polyclonal
Immunogen:	The immunogen for anti-SHBG antibody is: synthetic peptide directed towards the C-terminal region of SHBG. Synthetic peptide located within the following region: RGEDSSTSFCLNGLWAQGQRLDVDQALNRSHEIWITHSCPQSPGNGTDASH
Formulation:	Liquid. Purified antibody supplied in 1x PBS buffer with 0.09% (w/v) sodium azide and 2% sucrose. <i>Note that this product is shipped as lyophilized powder to China customers.</i>
Conjugation:	Unconjugated
Storage:	Store at -20°C as received.
Stability:	Stable for 12 months from date of receipt.
Predicted Protein Size:	31 kDa
Gene Name:	sex hormone binding globulin
Database Link:	NP_001139753 Entrez Gene 6462 Human P04278
Background:	This gene encodes a steroid binding protein that was first described as a plasma protein secreted by the liver but is now thought to participate in the regulation of steroid responses. The encoded protein binds each steroid molecule as a dimer formed from identical or nearly identical monomers. The use of alternate promoters and alternatively spliced transcripts have been described. Multiple transcript variants encoding different isoforms have been found for this gene.
Synonyms:	ABP; SBP; TEBG

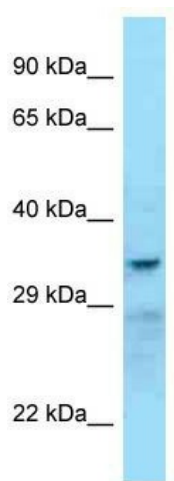


[View online »](#)

Note: Immunogen Sequence Homology: Human: 100%; Rabbit: 86%

Protein Families: Druggable Genome, Secreted Protein

Product images:



WB Suggested Anti-SHBG Antibody; Titration: 1.0 ug/ml; Positive Control: Hela Whole Cell