

Product datasheet for **TA343265**

HLAA (HLA-A) Rabbit Polyclonal Antibody

Product data:

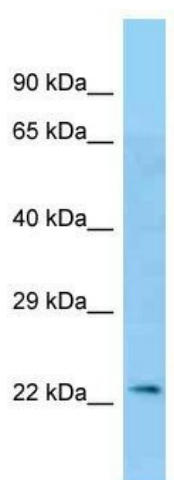
Product Type:	Primary Antibodies
Applications:	WB
Recommended Dilution:	WB
Reactivity:	Human
Host:	Rabbit
Isotype:	IgG
Clonality:	Polyclonal
Immunogen:	The immunogen for anti-HLA-A antibody is: synthetic peptide directed towards the N-terminal region of Human HLA-A. Synthetic peptide located within the following region: SDAASQRMEPRAPWIEQEGPEYWDQETRNVKAQSQTDRVDLGLTRGYYNQ
Formulation:	Liquid. Purified antibody supplied in 1x PBS buffer with 0.09% (w/v) sodium azide and 2% sucrose. <i>Note that this product is shipped as lyophilized powder to China customers.</i>
Purification:	Affinity Purified
Conjugation:	Unconjugated
Storage:	Store at -20°C as received.
Stability:	Stable for 12 months from date of receipt.
Predicted Protein Size:	24 kDa
Gene Name:	major histocompatibility complex, class I, A
Database Link:	NP_002107 Entrez Gene 3105 Human P04439
Background:	The function of this protein remains unknown.
Synonyms:	HLAA
Note:	Immunogen Sequence Homology: Human: 100%
Protein Families:	Transmembrane



[View online »](#)

Protein Pathways:

Allograft rejection, Antigen processing and presentation, Autoimmune thyroid disease, Cell adhesion molecules (CAMs), Endocytosis, Graft-versus-host disease, Natural killer cell mediated cytotoxicity, Type I diabetes mellitus, Viral myocarditis

Product images:

Host: Rabbit; Target Name: HLA-A; Sample Tissue: OVCAR-3 Whole Cell lysates; Antibody Dilution: 1.0 ug/ml