

Product datasheet for **TA343264**

UBE2Z Rabbit Polyclonal Antibody

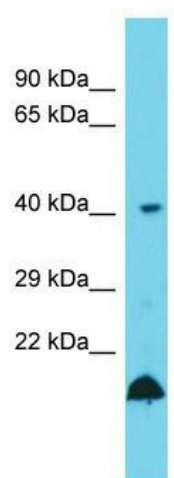
Product data:

Product Type:	Primary Antibodies
Applications:	WB
Recommended Dilution:	WB
Reactivity:	Rat
Host:	Rabbit
Isotype:	IgG
Clonality:	Polyclonal
Immunogen:	The immunogen for anti-Ube2z antibody is: synthetic peptide directed towards the C-terminal region of Rat Ube2z. Synthetic peptide located within the following region: ISSVLISIQSLMTENPYHNEPGFEQERHPGDSKYNNECIRHETIRVAVCD
Formulation:	Liquid. Purified antibody supplied in 1x PBS buffer with 0.09% (w/v) sodium azide and 2% sucrose. <i>Note that this product is shipped as lyophilized powder to China customers.</i>
Conjugation:	Unconjugated
Storage:	Store at -20°C as received.
Stability:	Stable for 12 months from date of receipt.
Predicted Protein Size:	39 kDa
Gene Name:	ubiquitin conjugating enzyme E2 Z
Database Link:	NP_075567 Entrez Gene 303478 Rat Q9H832
Background:	Ube2z catalyzes the covalent attachment of ubiquitin to other proteins. It is a specific substrate for UBA6, not charged with ubiquitin by UBE1 and may be involved in apoptosis regulation.
Synonyms:	HOYS7; USE1
Note:	Immunogen Sequence Homology: Dog: 100%; Pig: 100%; Rat: 100%; Horse: 100%; Human: 100%; Mouse: 100%; Bovine: 100%; Rabbit: 100%; Zebrafish: 100%; Guinea pig: 100%
Protein Pathways:	Acute myeloid leukemia, Pathways in cancer, Ubiquitin mediated proteolysis



[View online »](#)

Product images:



Host: Rabbit; Target Name: Ube2z; Sample
Tissue: Rat Testis lysates; Antibody Dilution: 1.0
ug/ml