

## Product datasheet for **TA343263**

### TLL3 Rabbit Polyclonal Antibody

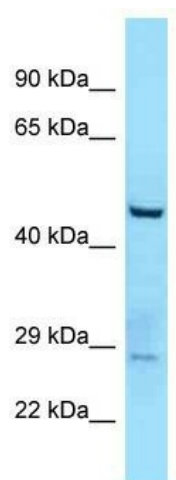
#### Product data:

Product Type:	Primary Antibodies
Applications:	WB
Recommended Dilution:	WB
Reactivity:	Human
Host:	Rabbit
Isotype:	IgG
Clonality:	Polyclonal
Immunogen:	The immunogen for anti-TLL3 antibody is: synthetic peptide directed towards the C-terminal region of TLL3. Synthetic peptide located within the following region: APVGRSRPKANSRPDCDKPRAEACPMKRLSPLKPLPLVGTFRRRGLGDM
Formulation:	Liquid. Purified antibody supplied in 1x PBS buffer with 0.09% (w/v) sodium azide and 2% sucrose.
Conjugation:	Unconjugated
Storage:	Store at -20°C as received.
Stability:	Stable for 12 months from date of receipt.
Predicted Protein Size:	48 kDa
Gene Name:	tubulin tyrosine ligase like 3
Database Link:	<a href="#">NP_001021100</a> <a href="#">Entrez Gene 26140 Human</a> <a href="#">Q9Y4R7</a>
Background:	TLL3 is a monoglycylase which modifies alpha- and beta-tubulin, generating side chains of glycine on the gamma-carboxyl groups of specific glutamate residues within the C-terminal tail of alpha- and beta-tubulin. It is involved in the side-chain initiation step of the glycylation reaction by adding a single glycine chain to generate monoglycine side chains. It is not involved in elongation step of the polyglycylation reaction.
Synonyms:	HOTTL
Note:	Immunogen Sequence Homology: Human: 100%



[View online »](#)

## Product images:



WB Suggested Anti-TTLL3 Antibody; Titration: 1.0 ug/ml; Positive Control: Fetal Kidney