

## Product datasheet for **TA343262**

### THTPA Rabbit Polyclonal Antibody

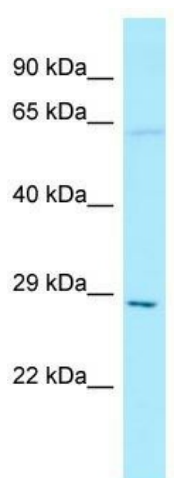
#### Product data:

Product Type:	Primary Antibodies
Applications:	WB
Recommended Dilution:	WB
Reactivity:	Human
Host:	Rabbit
Isotype:	IgG
Clonality:	Polyclonal
Immunogen:	The immunogen for anti-THTPA antibody is: synthetic peptide directed towards the N-terminal region of Human THTPA. Synthetic peptide located within the following region: KFLPGPGTEERLQELGGTLEYRVTFRDITYDTPELSLMQADHWLRRREDS
Formulation:	Liquid. Purified antibody supplied in 1x PBS buffer with 0.09% (w/v) sodium azide and 2% sucrose. <i>Note that this product is shipped as lyophilized powder to China customers.</i>
Conjugation:	Unconjugated
Storage:	Store at -20°C as received.
Stability:	Stable for 12 months from date of receipt.
Predicted Protein Size:	25 kDa
Gene Name:	thiamine triphosphatase
Database Link:	<a href="#">NP_077304</a> <a href="#">Entrez Gene 79178 Human Q9BU02</a>
Background:	This gene encodes an enzyme which catalyzes the biosynthesis of thiamine diphosphate (vitamin B1) by hydrolysis of thiamine triphosphate. Alternative splicing results in multiple transcript variants.
Synonyms:	THTP; THTPASE
Note:	Immunogen Sequence Homology: Pig: 100%; Rat: 100%; Goat: 100%; Horse: 100%; Human: 100%; Guinea pig: 100%; Bovine: 93%; Mouse: 92%; Rabbit: 92%; Dog: 85%
Protein Pathways:	Metabolic pathways, Thiamine metabolism



[View online »](#)

## Product images:



WB Suggested Anti-THTPA Antibody; Titration: 1.0 ug/ml; Positive Control: ACHN Whole Cell