

Product datasheet for **TA343261**

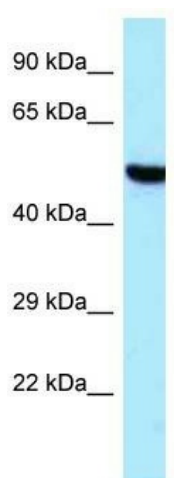
TARS2 Rabbit Polyclonal Antibody

Product data:

Product Type:	Primary Antibodies
Applications:	WB
Recommended Dilution:	WB
Reactivity:	Human
Host:	Rabbit
Isotype:	IgG
Clonality:	Polyclonal
Immunogen:	The immunogen for anti-TARS2 antibody is: synthetic peptide directed towards the C-terminal region of Human TARS2. Synthetic peptide located within the following region: VVVIPVGSEQEYAKEAQQLRAAGLVSDLADSGTLRIRRAQLAHY
Formulation:	Liquid. Purified antibody supplied in 1x PBS buffer with 0.09% (w/v) sodium azide and 2% sucrose. <i>Note that this product is shipped as lyophilized powder to China customers.</i>
Purification:	Affinity Purified
Conjugation:	Unconjugated
Storage:	Store at -20°C as received.
Stability:	Stable for 12 months from date of receipt.
Predicted Protein Size:	48 kDa
Gene Name:	threonyl-tRNA synthetase 2, mitochondrial (putative)
Database Link:	NP_079426 Entrez Gene 80222 Human Q9BW92
Background:	The function of this protein remains unknown.
Synonyms:	COXPD21; TARSL1; thrRS
Note:	Immunogen Sequence Homology: Human: 100%; Yeast: 100%; Pig: 93%; Bovine: 86%; Dog: 85%; Rat: 79%
Protein Pathways:	Aminoacyl-tRNA biosynthesis



[View online »](#)

Product images:

Host: Rabbit; Target Name: TARS2; Sample
Tissue: HepG2 whole cell lysates; Antibody
Dilution: 1.0 ug/ml