

Product datasheet for **TA343258**

SEC13L1 (SEC13) Rabbit Polyclonal Antibody

Product data:

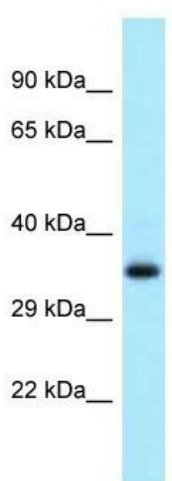
Product Type:	Primary Antibodies
Applications:	WB
Recommended Dilution:	WB
Reactivity:	Human
Host:	Rabbit
Isotype:	IgG
Clonality:	Polyclonal
Immunogen:	The immunogen for anti-SEC13 antibody is: synthetic peptide directed towards the C-terminal region of Human SEC13. Synthetic peptide located within the following region: IKLWKEEEDGQWKKEEQKLEAHSWVRDVAWAPSIGLPTSTIASCSQDGRV
Formulation:	Liquid. Purified antibody supplied in 1x PBS buffer with 0.09% (w/v) sodium azide and 2% sucrose. <i>Note that this product is shipped as lyophilized powder to China customers.</i>
Purification:	Affinity Purified
Conjugation:	Unconjugated
Storage:	Store at -20°C as received.
Stability:	Stable for 12 months from date of receipt.
Predicted Protein Size:	35 kDa
Gene Name:	SEC13 homolog, nuclear pore and COPII coat complex component
Database Link:	NP_899195 Entrez Gene 6396 Human P55735
Background:	The protein encoded by this gene belongs to the SEC13 family of WD-repeat proteins. It is a constituent of the endoplasmic reticulum and the nuclear pore complex. It has similarity to the yeast SEC13 protein, which is required for vesicle biogenesis from endoplasmic reticulum during the transport of proteins. Multiple alternatively spliced transcript variants have been found.
Synonyms:	D3S1231E; npp-20; SEC13L1; SEC13R



[View online »](#)

Note: Immunogen Sequence Homology: Dog: 100%; Rat: 100%; Horse: 100%; Human: 100%; Mouse: 100%; Bovine: 100%; Rabbit: 100%; Zebrafish: 93%; Pig: 85%; Guinea pig: 85%

Product images:



Host: Rabbit
Target Name: SEC13
Sample Tissue: Fetal Heart Lysate
Antibody Dilution: 1.0µg/ml

Host: Rabbit; Target Name: SEC13; Sample Tissue: Fetal Heart lysates; Antibody Dilution: 1.0 ug/ml