

Product datasheet for **TA343257**

PRP18 homolog (PRPF18) Rabbit Polyclonal Antibody

Product data:

Product Type:	Primary Antibodies
Applications:	WB
Recommended Dilution:	WB
Reactivity:	Human
Host:	Rabbit
Isotype:	IgG
Clonality:	Polyclonal
Immunogen:	The immunogen for anti-PRPF18 antibody is: synthetic peptide directed towards the middle region of Human PRPF18. Synthetic peptide located within the following region: NKGLRNDLKAALDKIDQQLNEIVGGQEPGEEDTQNDLKVHEENTTIEEL
Formulation:	Liquid. Purified antibody supplied in 1x PBS buffer with 0.09% (w/v) sodium azide and 2% sucrose. <i>Note that this product is shipped as lyophilized powder to China customers.</i>
Purification:	Affinity Purified
Conjugation:	Unconjugated
Storage:	Store at -20°C as received.
Stability:	Stable for 12 months from date of receipt.
Predicted Protein Size:	37 kDa
Gene Name:	pre-mRNA processing factor 18
Database Link:	NP_003666 Entrez Gene 8559 Human Q99633
Background:	Pre-mRNA splicing occurs in 2 sequential transesterification steps. The protein encoded by this gene is found to be essential for the catalytic step II in pre-mRNA splicing process. It is found in the spliceosome, and contains seven WD repeats, which function in protein-protein interactions. This protein has a sequence similarity to the yeast splicing factor Prp18.
Synonyms:	hPrp18; PRP18

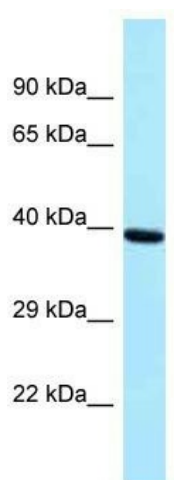


[View online »](#)

Note: Immunogen Sequence Homology: Dog: 100%; Pig: 100%; Rat: 100%; Horse: 100%; Human: 100%; Mouse: 100%; Bovine: 100%; Rabbit: 100%; Guinea pig: 100%

Protein Pathways: Spliceosome

Product images:



Host: Rabbit; Target Name: PRPF18; Sample Tissue: Placenta lysates; Antibody Dilution: 1.0 ug/ml