

## Product datasheet for **TA343255**

### cPLA2 beta (PLA2G4B) Rabbit Polyclonal Antibody

#### Product data:

Product Type:	Primary Antibodies
Applications:	WB
Recommended Dilution:	WB
Reactivity:	Human
Host:	Rabbit
Isotype:	IgG
Clonality:	Polyclonal
Immunogen:	The immunogen for anti-PLA2G4B antibody is: synthetic peptide directed towards the C-terminal region of Human PLA2G4B. Synthetic peptide located within the following region: LQLLGRFCQEQGIPFPISPSPPEEQQLQPRECHTFSDPTCPGAPAVLHFPL
Formulation:	Liquid. Purified antibody supplied in 1x PBS buffer with 0.09% (w/v) sodium azide and 2% sucrose. <i>Note that this product is shipped as lyophilized powder to China customers.</i>
Purification:	Affinity Purified
Conjugation:	Unconjugated
Storage:	Store at -20°C as received.
Stability:	Stable for 12 months from date of receipt.
Predicted Protein Size:	85 kDa
Gene Name:	phospholipase A2 group IVB
Database Link:	<a href="#">NP_001108105</a> <a href="#">Entrez Gene 100137049 Human</a> <a href="#">POC869</a>



[View online »](#)

**Background:**

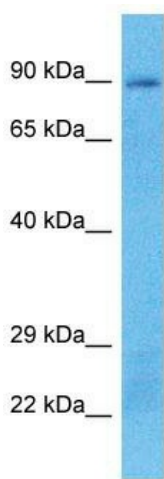
This gene encodes a member of the cytosolic phospholipase A2 protein family. Phospholipase A2 enzymes hydrolyze the sn-2 bond of phospholipids, releasing lysophospholipids and fatty acids. This enzyme may be associated with mitochondria and early endosomes. Most tissues also express read-through transcripts from the upstream gene into this gene, some of which may encode fusion proteins combining the N-terminus of the upstream gene including its JmjC domain with the almost complete coding region of this gene, including the C2 and cytoplasmic phospholipase A2 domains.

**Synonyms:**

cPLA2-beta; HsT16992

**Note:**

Immunogen Sequence Homology: Horse: 100%; Human: 100%; Dog: 79%; Rabbit: 79%

**Product images:**

Host: Rabbit

Target Name: PLA2G4B

Sample Tissue: MCF7 Cell Lysate

Antibody Dilution: 1.0 µg/ml

Host: Rabbit; Target Name: PLA2G4B; Sample Tissue: MCF7 Whole Cell lysates; Antibody Dilution: 1.0 ug/ml