

Product datasheet for **TA343254**

NUPL1 (NUP58) Rabbit Polyclonal Antibody

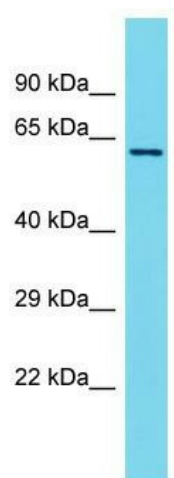
Product data:

Product Type:	Primary Antibodies
Applications:	WB
Recommended Dilution:	WB
Reactivity:	Rat
Host:	Rabbit
Isotype:	IgG
Clonality:	Polyclonal
Immunogen:	The immunogen for anti-Nupl1 antibody is: synthetic peptide directed towards the middle region of Rat Nupl1. Synthetic peptide located within the following region: GGIDFSTSSDKKSDKTGTRPEDSKALKDENLPPVICQDVENLQKFVKEQK
Formulation:	Liquid. Purified antibody supplied in 1x PBS buffer with 0.09% (w/v) sodium azide and 2% sucrose. <i>Note that this product is shipped as lyophilized powder to China customers.</i>
Conjugation:	Unconjugated
Storage:	Store at -20°C as received.
Stability:	Stable for 12 months from date of receipt.
Predicted Protein Size:	64 kDa
Gene Name:	nucleoporin 58kDa
Database Link:	NP_054808 Entrez Gene 245922 Rat Q9BVL2
Background:	Alternative splice products p58 and p45 are O-linked glycoprotein components of the nuclear pore p62 complex and may play a role in nuclear protein import.
Synonyms:	NUP45; NUPL1; PRO2463
Note:	Immunogen Sequence Homology: Dog: 100%; Pig: 100%; Rat: 100%; Horse: 100%; Human: 100%; Mouse: 100%; Bovine: 100%; Rabbit: 100%; Guinea pig: 100%



[View online »](#)

Product images:



Host: Rabbit; Target Name: Nupl1; Sample
Tissue: Rat Thymus lysates; Antibody Dilution: 1.0
ug/ml