

## Product datasheet for **TA343253**

### NDUFB10 Rabbit Polyclonal Antibody

#### Product data:

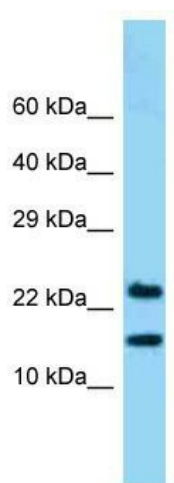
Product Type:	Primary Antibodies
Applications:	WB
Recommended Dilution:	WB
Reactivity:	Human
Host:	Rabbit
Isotype:	IgG
Clonality:	Polyclonal
Immunogen:	The immunogen for anti-NDUFB10 antibody is: synthetic peptide directed towards the C-terminal region of NDUFB10. Synthetic peptide located within the following region: KVDQEIIINIMQDRLKACQQREGQNYQQNCIKEVEQFTQVAKAYQDRYQDL
Formulation:	Liquid. Purified antibody supplied in 1x PBS buffer with 0.09% (w/v) sodium azide and 2% sucrose. <i>Note that this product is shipped as lyophilized powder to China customers.</i>
Conjugation:	Unconjugated
Storage:	Store at -20°C as received.
Stability:	Stable for 12 months from date of receipt.
Predicted Protein Size:	19 kDa
Gene Name:	NADH:ubiquinone oxidoreductase subunit B10
Database Link:	<a href="#">NP_004539</a> <a href="#">Entrez Gene 4716 Human</a> <a href="#">O96000</a>
Background:	NDUFB10 is an accessory subunit of the mitochondrial membrane respiratory chain NADH dehydrogenase (Complex I), that is believed not to be involved in catalysis. Complex I functions in the transfer of electrons from NADH to the respiratory chain. The immediate electron acceptor for the enzyme is believed to be ubiquinone.
Synonyms:	PDSW
Note:	Immunogen Sequence Homology: Human: 100%; Pig: 93%; Rat: 93%; Mouse: 93%; Guinea pig: 93%; Dog: 79%; Horse: 79%; Zebrafish: 79%



[View online »](#)

**Protein Pathways:** Alzheimer's disease, Huntington's disease, Metabolic pathways, Oxidative phosphorylation, Parkinson's disease

**Product images:**



WB Suggested Anti-NDUFB10 Antibody; Titration: 1.0 ug/ml; Positive Control: Fetal kidney