

Product datasheet for **TA343250**

LAPTM4B Rabbit Polyclonal Antibody

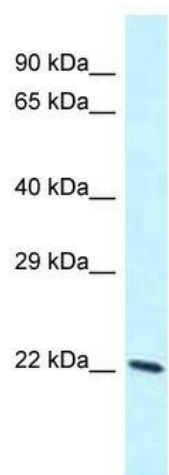
Product data:

Product Type:	Primary Antibodies
Applications:	WB
Recommended Dilution:	WB
Reactivity:	Mouse
Host:	Rabbit
Isotype:	IgG
Clonality:	Polyclonal
Immunogen:	The immunogen for anti-Laptm4b antibody is: synthetic peptide directed towards the C-terminal region of Mouse Laptm4b. Synthetic peptide located within the following region: SCRYRINGRNSSDVLVYVTSNDTTVLLPPYDDATAVPSTAKEPPPPYVSA
Formulation:	Liquid. Purified antibody supplied in 1x PBS buffer with 0.09% (w/v) sodium azide and 2% sucrose. <i>Note that this product is shipped as lyophilized powder to China customers.</i>
Conjugation:	Unconjugated
Storage:	Store at -20°C as received.
Stability:	Stable for 12 months from date of receipt.
Predicted Protein Size:	25 kDa
Gene Name:	lysosomal protein transmembrane 4 beta
Database Link:	NP_060877 Entrez Gene 114128 Mouse Q86VI4
Background:	The function of this protein remains unknown.
Synonyms:	LAPTM4beta; LC27
Note:	Immunogen Sequence Homology: Dog: 100%; Pig: 100%; Horse: 100%; Human: 100%; Mouse: 100%; Rabbit: 100%; Guinea pig: 100%; Rat: 86%; Bovine: 79%
Protein Families:	Transmembrane
Protein Pathways:	Lysosome



[View online »](#)

Product images:



WB Suggested Anti-Laptm4b Antibody; Titration:
1.0 ug/ml; Positive Control: NIH-3T3 Whole Cell