

Product datasheet for **TA343249**

GTPBP5 (MTG2) Rabbit Polyclonal Antibody

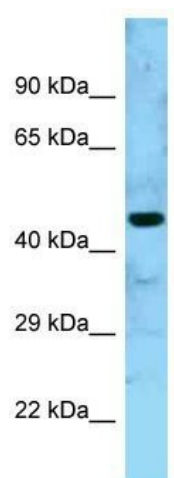
Product data:

Product Type:	Primary Antibodies
Applications:	WB
Recommended Dilution:	WB
Reactivity:	Human
Host:	Rabbit
Isotype:	IgG
Clonality:	Polyclonal
Immunogen:	The immunogen for anti-GTPBP5 antibody is: synthetic peptide directed towards the N-terminal region of GTPBP5. Synthetic peptide located within the following region: SRYQGFSGEDGGSKNCFGRSGAVLYIRVPVGTLVKEGGRVVADLSCVGDE
Formulation:	Liquid. Purified antibody supplied in 1x PBS buffer with 0.09% (w/v) sodium azide and 2% sucrose. <i>Note that this product is shipped as lyophilized powder to China customers.</i>
Conjugation:	Unconjugated
Storage:	Store at -20°C as received.
Stability:	Stable for 12 months from date of receipt.
Predicted Protein Size:	45 kDa
Gene Name:	mitochondrial ribosome associated GTPase 2
Database Link:	NP_056481 Entrez Gene 26164 Human Q9H4K7
Background:	Small G proteins, such as GTPBP5, act as molecular switches that play crucial roles in the regulation of fundamental cellular processes such as protein synthesis, nuclear transport, membrane trafficking, and signal transduction .
Synonyms:	dj1005F21.2; GTPBP5; ObgH1
Note:	Immunogen Sequence Homology: Pig: 100%; Rat: 100%; Human: 100%; Mouse: 100%; Guinea pig: 100%; Rabbit: 92%; Zebrafish: 91%; Horse: 86%; Bovine: 86%



[View online »](#)

Product images:



WB Suggested Anti-MTG2 Antibody; Titration: 1.0 ug/ml; Positive Control: Fetal Kidney