

Product datasheet for **TA343248**

GPR52 Rabbit Polyclonal Antibody

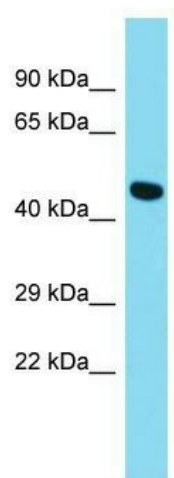
Product data:

Product Type:	Primary Antibodies
Applications:	WB
Recommended Dilution:	WB
Reactivity:	Rat
Host:	Rabbit
Isotype:	IgG
Clonality:	Polyclonal
Immunogen:	The immunogen for anti-LOC684623 antibody is: synthetic peptide directed towards the middle region of Rat LOC684623. Synthetic peptide located within the following region: RARFPSHEVDASREAGHSPDRRYAMVLFRICTSVFYMLWLPYIIYFLLESS
Formulation:	Liquid. Purified antibody supplied in 1x PBS buffer with 0.09% (w/v) sodium azide and 2% sucrose.
Conjugation:	Unconjugated
Storage:	Store at -20°C as received.
Stability:	Stable for 12 months from date of receipt.
Predicted Protein Size:	41 kDa
Gene Name:	G protein-coupled receptor 52
Database Link:	NP_005675 Entrez Gene 684623 Rat Q9Y2T5
Background:	The function of this protein remaining unknown.
Synonyms:	MGC111751
Note:	Immunogen Sequence Homology: Pig: 100%; Human: 100%; Guinea pig: 93%; Rat: 90%; Bovine: 82%; Mouse: 79%
Protein Families:	Druggable Genome, GPCR, Transmembrane



[View online »](#)

Product images:



Host: Rabbit; Target Name: Gpr52; Sample
Tissue: Rat Lung lysates; Antibody Dilution: 1.0
ug/ml