

## Product datasheet for **TA343247**

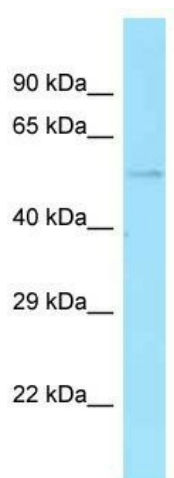
### GPATCH4 Rabbit Polyclonal Antibody

#### Product data:

Product Type:	Primary Antibodies
Applications:	WB
Recommended Dilution:	WB
Reactivity:	Human
Host:	Rabbit
Isotype:	IgG
Clonality:	Polyclonal
Immunogen:	The immunogen for anti-GPATCH4 antibody is: synthetic peptide directed towards the N-terminal region of Human GPATCH4. Synthetic peptide located within the following region: KPNLLYQKFVKMATLTSGGEKPNKDLSCSDDDNQGSKSPKILTDEMLLQ
Formulation:	Liquid. Purified antibody supplied in 1x PBS buffer with 0.09% (w/v) sodium azide and 2% sucrose.
Purification:	Affinity Purified
Conjugation:	Unconjugated
Storage:	Store at -20°C as received.
Stability:	Stable for 12 months from date of receipt.
Predicted Protein Size:	49 kDa
Gene Name:	G-patch domain containing 4
Database Link:	<a href="#">NP_056405</a> <a href="#">Entrez Gene 54865 Human</a>
Background:	The function of this protein remains unknown.
Synonyms:	GPATC4
Note:	Immunogen Sequence Homology: Human: 100%; Rabbit: 93%; Dog: 92%; Pig: 85%; Rat: 79%; Horse: 79%; Bovine: 79%; Guinea pig



[View online »](#)

**Product images:**

Host: Rabbit; Target Name: GPATCH4; Sample  
Tissue: U937 Whole Cell lysates; Antibody  
Dilution: 1.0 ug/ml