

Product datasheet for **TA343245**

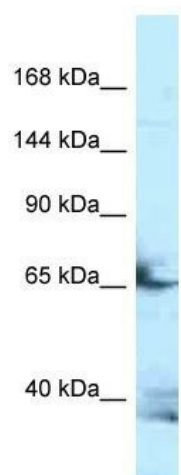
FSTL4 Rabbit Polyclonal Antibody

Product data:

Product Type:	Primary Antibodies
Applications:	WB
Recommended Dilution:	WB
Reactivity:	Human
Host:	Rabbit
Isotype:	IgG
Clonality:	Polyclonal
Immunogen:	The immunogen for anti-FSTL4 antibody is: synthetic peptide directed towards the N-terminal region of Human FSTL4. Synthetic peptide located within the following region: VLLALQTRLQPLQEGDSRQDPASQKRLLVESLFRDLADGNGHLSSELA
Formulation:	Liquid. Purified antibody supplied in 1x PBS buffer with 0.09% (w/v) sodium azide and 2% sucrose.
Purification:	Affinity Purified
Conjugation:	Unconjugated
Storage:	Store at -20°C as received.
Stability:	Stable for 12 months from date of receipt.
Predicted Protein Size:	66 kDa
Gene Name:	follistatin like 4
Database Link:	NP_055897 Entrez Gene 23105 Human Q6MZW2
Background:	The function of this protein remains unknown.
Synonyms:	follistatin-like 4
Note:	Immunogen Sequence Homology: Horse: 100%; Human: 100%; Dog: 92%; Rat: 83%; Pig: 79%



[View online »](#)

Product images:


Host: Rabbit; Target Name: FSTL4; Sample Tissue: HepG2 Whole Cell lysates; Antibody Dilution: 1.0 ug/ml