

Product datasheet for **TA343241**

CRISPLD1 Rabbit Polyclonal Antibody

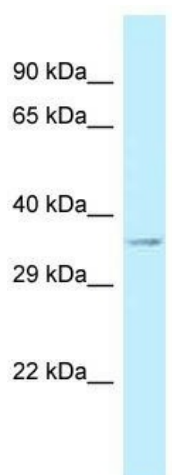
Product data:

Product Type:	Primary Antibodies
Applications:	WB
Recommended Dilution:	WB
Reactivity:	Human
Host:	Rabbit
Isotype:	IgG
Clonality:	Polyclonal
Immunogen:	The immunogen for anti-CRISPLD1 antibody is: synthetic peptide directed towards the N-terminal region of Human CRISPLD1. Synthetic peptide located within the following region: ENLCYKEGSDRYPPREEETNEIERQSQVHDTHVRTRSDDSSRNEVISA
Formulation:	Liquid. Purified antibody supplied in 1x PBS buffer with 0.09% (w/v) sodium azide and 2% sucrose. <i>Note that this product is shipped as lyophilized powder to China customers.</i>
Purification:	Affinity Purified
Conjugation:	Unconjugated
Storage:	Store at -20°C as received.
Stability:	Stable for 12 months from date of receipt.
Predicted Protein Size:	34 kDa
Gene Name:	cysteine rich secretory protein LCCL domain containing 1
Database Link:	NP_113649 Entrez Gene 83690 Human Q9H336
Background:	The function of this protein remains unknown.
Synonyms:	CRISP-10; CRISP10; LCRISP1
Note:	Immunogen Sequence Homology: Dog: 100%; Pig: 100%; Horse: 100%; Human: 100%; Mouse: 100%; Bovine: 100%; Rabbit: 100%; Rat: 93%; Guinea pig: 92%
Protein Families:	Secreted Protein



[View online »](#)

Product images:



Host: Rabbit; Target Name: CRISPLD1; Sample
Tissue: 721_B Whole Cell lysates; Antibody
Dilution: 1.0 ug/ml