

Product datasheet for **TA343240**

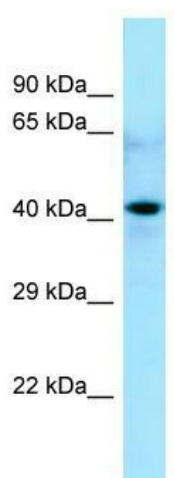
CDC20B Rabbit Polyclonal Antibody

Product data:

Product Type:	Primary Antibodies
Applications:	WB
Recommended Dilution:	WB
Reactivity:	Human
Host:	Rabbit
Isotype:	IgG
Clonality:	Polyclonal
Immunogen:	The immunogen for anti-CDC20B antibody is: synthetic peptide directed towards the N-terminal region of Human CDC20B. Synthetic peptide located within the following region: ERTAPRRVRTEEEMLWESIMRVLSKDLKQKRSQDSANVLDSVNATYSDFK
Formulation:	Liquid. Purified antibody supplied in 1x PBS buffer with 0.09% (w/v) sodium azide and 2% sucrose.
Purification:	Affinity Purified
Conjugation:	Unconjugated
Storage:	Store at -20°C as received.
Stability:	Stable for 12 months from date of receipt.
Predicted Protein Size:	40 kDa
Gene Name:	cell division cycle 20B
Database Link:	NP_689836 Entrez Gene 166979 Human Q86Y33
Background:	GTPase-activating protein for ARF1 and, to a lesser extent, ARF5. CDC20B directly and specifically regulates the adapter protein 3 (AP-3)-dependent trafficking of proteins in the endosomal-lysosomal system.
Synonyms:	G6VTS76519
Note:	Immunogen Sequence Homology: Human: 100%
Protein Families:	Druggable Genome



[View online »](#)

Product images:

Host: Rabbit; Target Name: CDC20B; Sample
Tissue: 293T Whole Cell lysates; Antibody
Dilution: 1.0 ug/ml