

## Product datasheet for **TA343239**

### **C10orf97 (FAM188A) Rabbit Polyclonal Antibody**

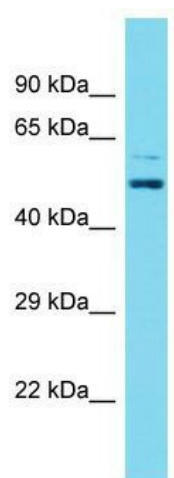
#### **Product data:**

Product Type:	Primary Antibodies
Applications:	WB
Recommended Dilution:	WB
Reactivity:	Rat
Host:	Rabbit
Isotype:	IgG
Clonality:	Polyclonal
Immunogen:	The immunogen for anti-Fam188a antibody is: synthetic peptide directed towards the N-terminal region of Rat Fam188a. Synthetic peptide located within the following region: CAVIAPVQAFLLKLLFSSEKSSWRDCSEDEQKELLCHTLCDILESACDS
Formulation:	Liquid. Purified antibody supplied in 1x PBS buffer with 0.09% (w/v) sodium azide and 2% sucrose.
Conjugation:	Unconjugated
Storage:	Store at -20°C as received.
Stability:	Stable for 12 months from date of receipt.
Predicted Protein Size:	48 kDa
Gene Name:	family with sequence similarity 188 member A
Database Link:	<a href="#">NP_079224</a> <a href="#">Entrez Gene 291320 Rat</a> <a href="#">Q9H8M7</a>
Background:	The function of this protein remaining unknown.
Synonyms:	C10orf97; CARP; DERP5; MST126; MSTP126; my042
Note:	Immunogen Sequence Homology: Pig: 100%; Rat: 100%; Human: 100%; Mouse: 100%; Guinea pig: 100%; Dog: 86%; Horse: 86%; Bovine: 86%; Rabbit: 86%
Protein Families:	Druggable Genome



[View online »](#)

## Product images:



Host: Rabbit; Target Name: Fam188a; Sample Tissue: Rat Lung lysates; Antibody Dilution: 1.0 ug/ml