

Product datasheet for **TA343238**

BAAT1 (BRAT1) Rabbit Polyclonal Antibody

Product data:

Product Type:	Primary Antibodies
Applications:	WB
Recommended Dilution:	WB
Reactivity:	Human
Host:	Rabbit
Isotype:	IgG
Clonality:	Polyclonal
Immunogen:	The immunogen for anti-BRAT1 antibody is: synthetic peptide directed towards the C-terminal region of Human BRAT1. Synthetic peptide located within the following region: FDCDRPVAQKSCDLLLFLRDKIASYSSLREARGSPNTASAEATLPRWRAG
Formulation:	Liquid. Purified antibody supplied in 1x PBS buffer with 0.09% (w/v) sodium azide and 2% sucrose. <i>Note that this product is shipped as lyophilized powder to China customers.</i>
Conjugation:	Unconjugated
Storage:	Store at -20°C as received.
Stability:	Stable for 12 months from date of receipt.
Predicted Protein Size:	87 kDa
Gene Name:	BRCA1 associated ATM activator 1
Database Link:	NP_689956 Entrez Gene 221927 Human Q6PJG6
Background:	The protein encoded by this ubiquitously expressed gene interacts with the tumor suppressing BRCA1 (breast cancer 1) protein and and the ATM (ataxia telangiectasia mutated) protein. ATM is thought to be a master controller of cell cycle checkpoint signalling pathways that are required for cellular responses to DNA damage such as double-strand breaks that are induced by ionizing radiation and complexes with BRCA1 in the multi-protein complex BASC (BRAC1-associated genome surveillance complex). The protein encoded by this gene is thought to play a role in the DNA damage pathway regulated by BRCA1 and ATM.

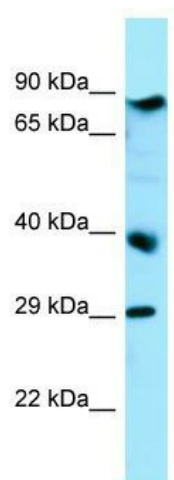


[View online »](#)

Synonyms: BAAT1; C7orf27; RMFSL

Note: Immunogen Sequence Homology: Human: 100%

Product images:



WB Suggested Anti-BRAT1 Antibody; Titration: 1.0 ug/ml; Positive Control: HepG2 Whole Cell