

## Product datasheet for **TA343237**

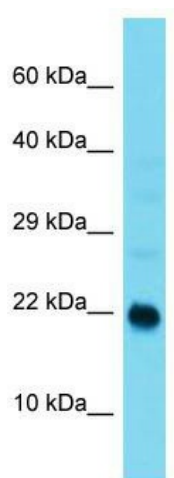
### ARL9 Rabbit Polyclonal Antibody

#### Product data:

Product Type:	Primary Antibodies
Applications:	WB
Recommended Dilution:	WB
Reactivity:	Mouse
Host:	Rabbit
Isotype:	IgG
Clonality:	Polyclonal
Immunogen:	The immunogen for anti-Arl9 antibody is: synthetic peptide directed towards the C-terminal region of Mouse Arl9. Synthetic peptide located within the following region: EMYLPKGWLLIFVVSADHKRLPEAKKYLHQLINPNPGLPLVVFANKQVF
Formulation:	Liquid. Purified antibody supplied in 1x PBS buffer with 0.09% (w/v) sodium azide and 2% sucrose. <i>Note that this product is shipped as lyophilized powder to China customers.</i>
Conjugation:	Unconjugated
Storage:	Store at -20°C as received.
Stability:	Stable for 12 months from date of receipt.
Predicted Protein Size:	15 kDa
Gene Name:	ADP ribosylation factor like GTPase 9
Database Link:	<a href="#">NP_996802</a> <a href="#">Entrez Gene 384185 Mouse</a> <a href="#">Q6T311</a>
Background:	The function of this protein remaining unknown.
Synonyms:	ADP-ribosylation factor-like 9
Note:	Immunogen Sequence Homology: Human: 100%; Dog: 93%; Pig: 93%; Rat: 93%; Mouse: 93%; Bovine: 93%; Rabbit: 93%; Guinea pig: 93%; Horse: 92%; Yeast: 79%; Zebrafish



[View online »](#)

**Product images:**

Host: Rabbit; Target Name: ARL9; Sample Tissue: Mouse Small Intestine lysates; Antibody Dilution: 1.0 ug/ml