

Product datasheet for **TA343236**

ALS2CR1 (NIF3L1) Rabbit Polyclonal Antibody

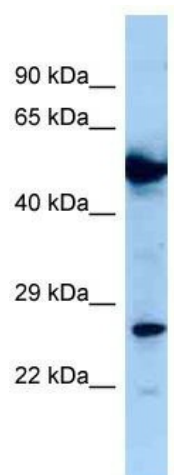
Product data:

Product Type:	Primary Antibodies
Applications:	WB
Recommended Dilution:	WB
Reactivity:	Human
Host:	Rabbit
Isotype:	IgG
Clonality:	Polyclonal
Immunogen:	The immunogen for anti-NIF3L1 antibody is: synthetic peptide directed towards the C-terminal region of Human NIF3L1. Synthetic peptide located within the following region: LDKVMSAVKIDGVSVTFSFARTGNEEQTRINLNCTQKALMQVDFLSRN
Formulation:	Liquid. Purified antibody supplied in 1x PBS buffer with 0.09% (w/v) sodium azide and 2% sucrose. <i>Note that this product is shipped as lyophilized powder to China customers.</i>
Purification:	Affinity Purified
Conjugation:	Unconjugated
Storage:	Store at -20°C as received.
Stability:	Stable for 12 months from date of receipt.
Predicted Protein Size:	27 kDa
Gene Name:	NGG1 interacting factor 3 like 1
Database Link:	NP_001129511 Entrez Gene 60491 Human Q9GZT8
Background:	The function of this protein remains unknown.
Synonyms:	ALS2CR1; CALS-7; MDS015
Note:	Immunogen Sequence Homology: Human: 100%; Dog: 86%; Bovine: 86%; Rabbit: 86%; Goat: 79%



[View online »](#)

Product images:



Host: Rabbit; Target Name: NIF3L1; Sample
Tissue: U937 Whole Cell lysates; Antibody
Dilution: 1.0 ug/ml