

Product datasheet for **TA343235**

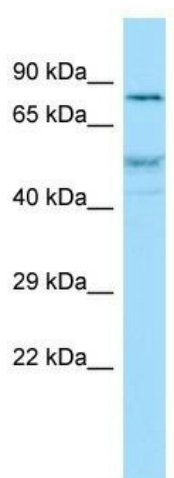
ZC3H11A Rabbit Polyclonal Antibody

Product data:

Product Type:	Primary Antibodies
Applications:	WB
Recommended Dilution:	WB
Reactivity:	Human
Host:	Rabbit
Isotype:	IgG
Clonality:	Polyclonal
Immunogen:	The immunogen for anti-ZC3H11A antibody is: synthetic peptide directed towards the N-terminal region of Human ZC3H11A. Synthetic peptide located within the following region: PTHPPVINAADDEDDDDQFSEEGDETKPTLQPTPEVHNGLRVTSVRK
Formulation:	Liquid. Purified antibody supplied in 1x PBS buffer with 0.09% (w/v) sodium azide and 2% sucrose.
Conjugation:	Unconjugated
Storage:	Store at -20°C as received.
Stability:	Stable for 12 months from date of receipt.
Predicted Protein Size:	89 kDa
Gene Name:	zinc finger CCCH-type containing 11A
Database Link:	NP_055642 Entrez Gene 9877 Human O75152
Background:	The function of this protein remains unknown.
Synonyms:	ZC3HDC11A
Note:	Immunogen Sequence Homology: Dog: 100%; Pig: 100%; Rat: 100%; Horse: 100%; Human: 100%; Bovine: 100%; Rabbit: 100%; Zebrafish: 100%; Guinea pig: 100%; Mouse: 92%



[View online »](#)

Product images:

Host: Rabbit; Target Name: ZC3H11A; Sample Tissue: NCI-H226 Whole Cell lysates; Antibody Dilution: 1.0 ug/ml ZC3H11A is strongly supported by BioGPS gene expression data to be expressed in NCI-H226