

Product datasheet for **TA343234**

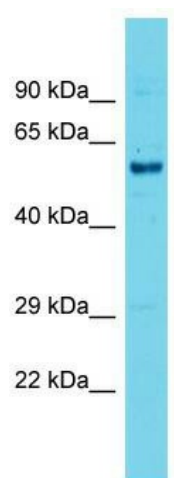
VAM1 (MPP6) Rabbit Polyclonal Antibody

Product data:

Product Type:	Primary Antibodies
Applications:	WB
Recommended Dilution:	WB
Reactivity:	Mouse
Host:	Rabbit
Isotype:	IgG
Clonality:	Polyclonal
Immunogen:	The immunogen for anti-Mpp6 antibody is: synthetic peptide directed towards the C-terminal region of Mouse Mpp6. Synthetic peptide located within the following region: TTVPFTRKPREDEKDGQAYKFVSRSEMEADIKAGKYLEHGGEYEGNLYGT
Formulation:	Liquid. Purified antibody supplied in 1x PBS buffer with 0.09% (w/v) sodium azide and 2% sucrose. <i>Note that this product is shipped as lyophilized powder to China customers.</i>
Purification:	Affinity Purified
Conjugation:	Unconjugated
Storage:	Store at -20°C as received.
Stability:	Stable for 12 months from date of receipt.
Predicted Protein Size:	60 kDa
Gene Name:	membrane palmitoylated protein 6
Database Link:	NP_057531 Entrez Gene 56524 Mouse Q9NZW5
Background:	The function of this protein remains unknown.
Synonyms:	p55T; PALS2; VAM-1; VAM1
Note:	Immunogen Sequence Homology: Dog: 100%; Pig: 100%; Rat: 100%; Horse: 100%; Human: 100%; Mouse: 100%; Bovine: 100%; Rabbit: 100%; Guinea pig: 100%; Zebrafish: 79%
Protein Families:	Druggable Genome, Stem cell - Pluripotency



[View online »](#)

Product images:

Host: Rabbit; Target Name: Mpp6; Sample Tissue: Mouse Testis lysates; Antibody Dilution: 1.0 ug/ml