

Product datasheet for **TA343233**

SLAMF1 Rabbit Polyclonal Antibody

Product data:

Product Type:	Primary Antibodies
Applications:	WB
Recommended Dilution:	WB
Reactivity:	Mouse
Host:	Rabbit
Isotype:	IgG
Clonality:	Polyclonal
Immunogen:	The immunogen for anti-Slamf1 antibody is: synthetic peptide directed towards the middle region of Mouse Slamf1. Synthetic peptide located within the following region: QVSPPEIKVLNKTQENENGTCSELLLACTVKKGDHVTYSWSDEAGTHLLSR
Formulation:	Liquid. Purified antibody supplied in 1x PBS buffer with 0.09% (w/v) sodium azide and 2% sucrose. <i>Note that this product is shipped as lyophilized powder to China customers.</i>
Conjugation:	Unconjugated
Storage:	Store at -20°C as received.
Stability:	Stable for 12 months from date of receipt.
Predicted Protein Size:	38 kDa
Gene Name:	signaling lymphocytic activation molecule family member 1
Database Link:	NP_003028 Entrez Gene 27218 Mouse Q13291
Background:	Slamf1 is a high-affinity self-ligand important in bidirectional T-cell to B-cell stimulation. SLAM-induced signal-transduction events in T-lymphocytes are different from those in B-cells. Two modes of SLAM signaling are likely to exist: one in which the inhibitor SH2D1A acts as a negative regulator and another in which protein-tyrosine phosphatase 2C (PTPN11)-dependent signal transduction operates.
Synonyms:	CD150; CDw150; SLAM

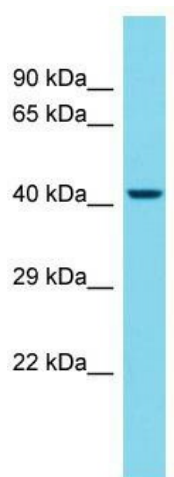


[View online »](#)

Note: Immunogen Sequence Homology: Pig: 100%; Human: 100%; Rat: 93%; Mouse: 87%; Dog: 85%; Horse: 85%; Rabbit: 80%; Guinea pig: 80%; Goat; Sheep; Bovine

Protein Families: Druggable Genome, ES Cell Differentiation/IPS, Transmembrane

Product images:



Host: Rabbit; Target Name: Slamf1; Sample Tissue: Mouse Spleen lysates; Antibody Dilution: 1.0 ug/ml