

Product datasheet for **TA343232**

MPPED2 Rabbit Polyclonal Antibody

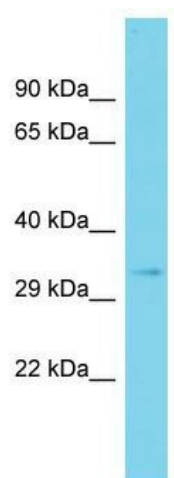
Product data:

Product Type:	Primary Antibodies
Applications:	WB
Recommended Dilution:	WB
Reactivity:	Rat
Host:	Rabbit
Isotype:	IgG
Clonality:	Polyclonal
Immunogen:	The immunogen for anti-Mpped2 antibody is: synthetic peptide directed towards the N-terminal region of Rat Mpped2. Synthetic peptide located within the following region: MAHGIPSQGKVTITVDEYSSNPTQAFTHYNINQSRFQPPHVHMDPIPYD
Formulation:	Liquid. Purified antibody supplied in 1x PBS buffer with 0.09% (w/v) sodium azide and 2% sucrose. <i>Note that this product is shipped as lyophilized powder to China customers.</i>
Conjugation:	Unconjugated
Storage:	Store at -20°C as received.
Stability:	Stable for 12 months from date of receipt.
Predicted Protein Size:	32 kDa
Gene Name:	metallophosphoesterase domain containing 2
Database Link:	NP_001575 Entrez Gene 362185 Rat Q15777
Background:	Human homolog is expressed in brain and maps to an area of the chromosome associated with WAGR syndrome; It may be involved in brain development.
Synonyms:	239FB; C11orf8
Note:	Immunogen Sequence Homology: Dog: 100%; Pig: 100%; Rat: 100%; Horse: 100%; Human: 100%; Mouse: 100%; Bovine: 100%; Rabbit: 100%; Zebrafish: 100%; Guinea pig: 100%



[View online »](#)

Product images:



Host: Rabbit; Target Name: Mpped2; Sample
Tissue: Rat Thymus lysates; Antibody Dilution: 1.0
ug/ml