

## Product datasheet for **TA343230**

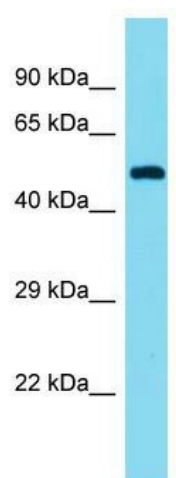
### ELL3 Rabbit Polyclonal Antibody

#### Product data:

|                         |   |
|-------------------------|---|
| Product Type:           | Primary Antibodies  |
| Applications:           | WB  |
| Recommended Dilution:   | WB  |
| Reactivity:             | Mouse   |
| Host:                   | Rabbit  |
| Isotype:                | IgG   |
| Clonality:              | Polyclonal  |
| Immunogen:              | The immunogen for anti-ELL3 antibody is: synthetic peptide directed towards the C-terminal region of Mouse ELL3. Synthetic peptide located within the following region:<br>PEHKVLEDKIVQEYKKFRKRYPSYREEKHRCEYLHQKLSHIKGLILEFEE |
| Formulation:            | Liquid. Purified antibody supplied in 1x PBS buffer with 0.09% (w/v) sodium azide and 2% sucrose.<br><i>Note that this product is shipped as lyophilized powder to China customers.</i>                                       |
| Conjugation:            | Unconjugated  |
| Storage:                | Store at -20°C as received.   |
| Stability:              | Stable for 12 months from date of receipt.  |
| Predicted Protein Size: | 45 kDa  |
| Gene Name:              | elongation factor for RNA polymerase II 3   |
| Database Link:          | <a href="#">NP_079441</a><br><a href="#">Entrez Gene 269344 Mouse</a><br><a href="#">Q9HB65</a>   |
| Background:             | ELL3 is an elongation factor that can increase the catalytic rate of RNA polymerase II transcription by suppressing transient pausing by the polymerase at multiple sites along the DNA.                                      |
| Synonyms:               | FLJ22637  |
| Note:                   | Immunogen Sequence Homology: Human: 100%; Dog: 86%; Rat: 86%; Horse: 86%; Mouse: 86%; Bovine: 86%; Rabbit: 86%; Pig: 79%  |
| Protein Families:       | Transcription Factors   |



[View online »](#)

**Product images:**

Host: Rabbit; Target Name: ELL3; Sample Tissue:  
Mouse Kidney lysates; Antibody Dilution: 1.0  
ug/ml