

Product datasheet for **TA343229**

ATP6V1G3 Rabbit Polyclonal Antibody

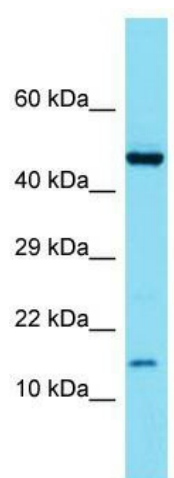
Product data:

Product Type:	Primary Antibodies
Applications:	WB
Recommended Dilution:	WB
Reactivity:	Mouse
Host:	Rabbit
Isotype:	IgG
Clonality:	Polyclonal
Immunogen:	The immunogen for anti-Atp6v1g3 antibody is: synthetic peptide directed towards the middle region of Mouse Atp6v1g3. Synthetic peptide located within the following region: MTSQSQGIQQLLQAEKRAKDKLDEAKKRKGKRLRQAKEEAVAETDQYRMQ
Formulation:	Liquid. Purified antibody supplied in 1x PBS buffer with 0.09% (w/v) sodium azide and 2% sucrose. <i>Note that this product is shipped as lyophilized powder to China customers.</i>
Conjugation:	Unconjugated
Storage:	Store at -20°C as received.
Stability:	Stable for 12 months from date of receipt.
Predicted Protein Size:	14 kDa
Gene Name:	ATPase H ⁺ transporting V1 subunit G3
Database Link:	NP_573569 Entrez Gene 338375 Mouse Q96LB4
Background:	Atp6v1g3 catalytic subunit of the peripheral V1 complex of vacuolar ATPase (V-ATPase). V-ATPase is responsible for acidifying a variety of intracellular compartments in eukaryotic cells.
Synonyms:	ATP6G3; Vma10
Note:	Immunogen Sequence Homology: Pig: 100%; Rat: 100%; Horse: 100%; Human: 100%; Rabbit: 100%; Guinea pig: 100%; Dog: 93%; Mouse: 93%; Bovine: 86%; Zebrafish: 86%
Protein Pathways:	Epithelial cell signaling in Helicobacter pylori infection, Metabolic pathways, Oxidative phosphorylation, Vibrio cholerae infection



[View online »](#)

Product images:



Host: Rabbit; Target Name: Atp6v1g3; Sample
Tissue: Mouse Spleen lysates; Antibody Dilution:
1.0 ug/ml