

Product datasheet for **TA343227**

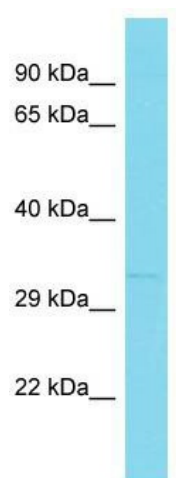
CUEDC2 Rabbit Polyclonal Antibody

Product data:

Product Type:	Primary Antibodies
Applications:	WB
Recommended Dilution:	WB
Reactivity:	Mouse
Host:	Rabbit
Isotype:	IgG
Clonality:	Polyclonal
Immunogen:	The immunogen for anti-Cuedc2 antibody is: synthetic peptide directed towards the middle region of Mouse Cuedc2. Synthetic peptide located within the following region: IPRGIIGDMMQKLSVQLSDARNKENLHPQSSCVQGQVPIFPETPRQAEKL
Formulation:	Liquid. Purified antibody supplied in 1x PBS buffer with 0.09% (w/v) sodium azide and 2% sucrose. <i>Note that this product is shipped as lyophilized powder to China customers.</i>
Conjugation:	Unconjugated
Storage:	Store at -20°C as received.
Stability:	Stable for 12 months from date of receipt.
Predicted Protein Size:	31 kDa
Gene Name:	CUE domain containing 2
Database Link:	NP_076945 Entrez Gene 67116 Mouse Q9H467
Background:	Cuedc2 controls PGR and ESR1 protein levels through their targeting for ubiquitination and subsequent proteasomal degradation.
Synonyms:	bA18I14.5; C10orf66
Note:	Immunogen Sequence Homology: Pig: 100%; Rat: 100%; Human: 100%; Rabbit: 100%; Guinea pig: 100%; Horse: 93%; Mouse: 93%; Dog: 86%; Bovine: 86%



[View online »](#)

Product images:

Host: Rabbit; Target Name: Cuedc2; Sample
Tissue: Mouse Heart lysates; Antibody Dilution:
1.0 ug/ml