

Product datasheet for **TA343226**

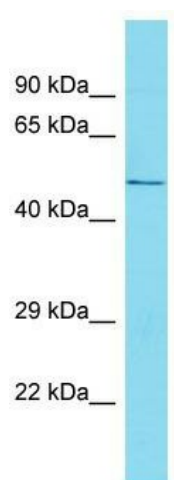
WDR26 Rabbit Polyclonal Antibody

Product data:

Product Type:	Primary Antibodies
Applications:	WB
Recommended Dilution:	WB
Reactivity:	Mouse
Host:	Rabbit
Isotype:	IgG
Clonality:	Polyclonal
Immunogen:	The immunogen for anti-Wdr26 antibody is: synthetic peptide directed towards the N-terminal region of Mouse Wdr26. Synthetic peptide located within the following region: TERIHVLSGYLMCSHAEDLRAKAEWEGKGTASRSKLLDKLQTYLPPSVML
Formulation:	Liquid. Purified antibody supplied in 1x PBS buffer with 0.09% (w/v) sodium azide and 2% sucrose. <i>Note that this product is shipped as lyophilized powder to China customers.</i>
Purification:	Affinity Purified
Conjugation:	Unconjugated
Storage:	Store at -20°C as received.
Stability:	Stable for 12 months from date of receipt.
Predicted Protein Size:	56 kDa
Gene Name:	WD repeat domain 26
Database Link:	NP_079436 Entrez Gene 226757 Mouse Q9H7D7
Background:	The function of this protein remains unknown.
Synonyms:	CDW2; GID7; MIP2
Note:	Immunogen Sequence Homology: Dog: 100%; Pig: 100%; Rat: 100%; Human: 100%; Mouse: 100%; Bovine: 100%; Rabbit: 100%; Zebrafish: 100%; Guinea pig: 100%; Horse: 93%



[View online »](#)

Product images:

Host: Rabbit; Target Name: Wdr26; Sample
Tissue: Mouse Spleen lysates; Antibody Dilution:
1.0 ug/ml