

Product datasheet for TA343225

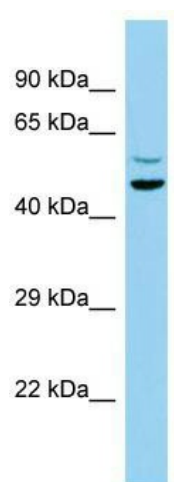
C7orf10 (SUGCT) Rabbit Polyclonal Antibody

Product data:

Product Type:	Primary Antibodies
Applications:	WB
Recommended Dilution:	WB
Reactivity:	Human
Host:	Rabbit
Isotype:	IgG
Clonality:	Polyclonal
Immunogen:	The immunogen for anti-C7orf10 antibody is: synthetic peptide directed towards the N-terminal region of Human C7orf10. Synthetic peptide located within the following region: LSVNRNKKSIHAVNIKDPKGVKIIYCSITGYGQTGPISQRAGYDAVASAVS
Formulation:	Liquid. Purified antibody supplied in 1x PBS buffer with 0.09% (w/v) sodium azide and 2% sucrose.
Conjugation:	Unconjugated
Storage:	Store at -20°C as received.
Stability:	Stable for 12 months from date of receipt.
Predicted Protein Size:	47 kDa
Gene Name:	succinyl-CoA:glutarate-CoA transferase
Database Link:	NP_079004 Entrez Gene 79783 Human Q9HAC7
Background:	This gene encodes a protein that is similar to members of the CaiB/baiF CoA-transferase protein family. Mutations in this gene are associated with glutaric aciduria type III. Alternate splicing results in multiple transcript variants.
Synonyms:	C7orf10; DERP13; GA3; ORF19
Note:	Immunogen Sequence Homology: Dog: 100%; Pig: 100%; Rat: 100%; Horse: 100%; Human: 100%; Mouse: 100%; Bovine: 100%; Rabbit: 100%; Guinea pig: 100%; Zebrafish: 93%


[View online »](#)

Product images:



Host: Rabbit; Target Name: C7orf10; Sample
Tissue: MCF7 Whole Cell lysates; Antibody
Dilution: 1.0 ug/ml