

Product datasheet for **TA343224**

NDUFA3 Rabbit Polyclonal Antibody

Product data:

Product Type:	Primary Antibodies
Applications:	WB
Recommended Dilution:	WB
Reactivity:	Mouse
Host:	Rabbit
Isotype:	IgG
Clonality:	Polyclonal
Immunogen:	The immunogen for anti-Ndufa3 antibody is: synthetic peptide directed towards the C-terminal region of Mouse Ndufa3. Synthetic peptide located within the following region: ISPYTKYASMINKATPYNYPVPRDDGNMPDVPSHPQDPLGPSLDWLKNL
Formulation:	Liquid. Purified antibody supplied in 1x PBS buffer with 0.09% (w/v) sodium azide and 2% sucrose. <i>Note that this product is shipped as lyophilized powder to China customers.</i>
Conjugation:	Unconjugated
Storage:	Store at -20°C as received.
Stability:	Stable for 12 months from date of receipt.
Predicted Protein Size:	9 kDa
Gene Name:	NADH:ubiquinone oxidoreductase subunit A3
Database Link:	NP_004533 Entrez Gene 66091 Mouse O95167
Background:	Accessory subunit of the mitochondrial membrane respiratory chain NADH dehydrogenase (Complex I), that is believed not to be involved in catalysis. Complex I functions in the transfer of electrons from NADH to the respiratory chain. The immediate electron acceptor for the enzyme is believed to be ubiquinone.
Synonyms:	B9; CI-B9
Note:	Immunogen Sequence Homology: Dog: 100%; Pig: 100%; Horse: 100%; Human: 100%; Bovine: 100%; Rabbit: 100%; Rat: 93%; Guinea pig: 93%; Mouse: 86%; Zebrafish

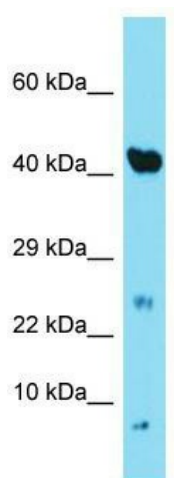


[View online »](#)

Protein Families: Transmembrane

Protein Pathways: Alzheimer's disease, Huntington's disease, Metabolic pathways, Oxidative phosphorylation, Parkinson's disease

Product images:



Host: Rabbit; Target Name: Ndufa3; Sample Tissue: Mouse Heart lysates; Antibody Dilution: 1.0 ug/ml