

## Product datasheet for TA343221

### IFNK Rabbit Polyclonal Antibody

#### Product data:

Product Type:	Primary Antibodies
Applications:	WB
Recommended Dilution:	WB
Reactivity:	Human
Host:	Rabbit
Isotype:	IgG
Clonality:	Polyclonal
Immunogen:	The immunogen for anti-IFNK antibody is: synthetic peptide directed towards the C-terminal region of Human IFNK. Synthetic peptide located within the following region: MKPSEARVPQLSSLELRRYFHRIDNFLKEKKYSDCAWEIVRVEIRRCLYY
Formulation:	Liquid. Purified antibody supplied in 1x PBS buffer with 0.09% (w/v) sodium azide and 2% sucrose. <i>Note that this product is shipped as lyophilized powder to China customers.</i>
Purification:	Affinity Purified
Conjugation:	Unconjugated
Storage:	Store at -20°C as received.
Stability:	Stable for 12 months from date of receipt.
Predicted Protein Size:	22 kDa
Gene Name:	interferon kappa
Database Link:	<a href="#">NP_064509</a> <a href="#">Entrez Gene 56832 Human</a> <a href="#">Q9P0W0</a>
Background:	This gene encodes a member of the type I interferon family. Type I interferons are a group of related glycoproteins that play an important role in host defenses against viral infections. This protein is expressed in keratinocytes and the gene is found on chromosome 9, adjacent to the type I interferon cluster.
Synonyms:	IFNT1; INFE1



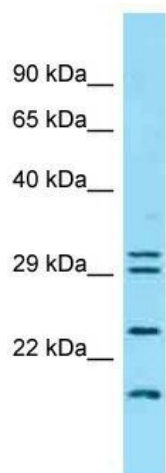
[View online »](#)

**Note:** Immunogen Sequence Homology: Human: 100%; Dog: 93%; Horse: 93%; Pig: 92%; Sheep: 85%; Bovine: 85%; Guinea pig: 85%; Rat; Goat

**Protein Families:** Druggable Genome, Secreted Protein, Transmembrane

**Protein Pathways:** Cytokine-cytokine receptor interaction, Jak-STAT signaling pathway, RIG-I-like receptor signaling pathway

### Product images:



Host: Rabbit; Target Name: IFNK; Sample Tissue: HT1080 whole cell lysates; Antibody Dilution: 1.0 ug/ml