

Product datasheet for **TA343220**

FAM167A Rabbit Polyclonal Antibody

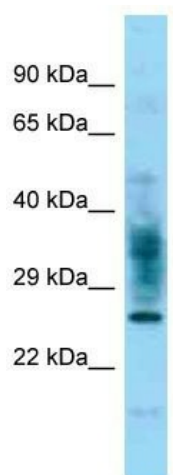
Product data:

Product Type:	Primary Antibodies
Applications:	WB
Recommended Dilution:	WB
Reactivity:	Human
Host:	Rabbit
Isotype:	IgG
Clonality:	Polyclonal
Immunogen:	The immunogen for anti-FAM167A antibody is: synthetic peptide directed towards the C-terminal region of Human FAM167A. Synthetic peptide located within the following region: GDINKLKIEHTCRLHRRMLNDATYELEERDELADLFCDSPASSFSLSSTP
Formulation:	Liquid. Purified antibody supplied in 1x PBS buffer with 0.09% (w/v) sodium azide and 2% sucrose.
Purification:	Affinity Purified
Conjugation:	Unconjugated
Storage:	Store at -20°C as received.
Stability:	Stable for 12 months from date of receipt.
Predicted Protein Size:	23 kDa
Gene Name:	family with sequence similarity 167 member A
Database Link:	NP_444509 Entrez Gene 83648 Human Q96KS9
Background:	The function of this protein remains unknown.
Synonyms:	C8orf13; D8S265
Note:	Immunogen Sequence Homology: Human: 100%; Rabbit: 100%; Dog: 93%; Pig: 93%; Rat: 93%; Horse: 93%; Mouse: 93%; Bovine: 93%; Guinea pig: 93%; Zebrafish: 85%



[View online »](#)

Product images:



Host: Rabbit
 Target Name: FAM167A
 Sample Tissue: U937 Cell Lysate
 Antibody Dilution: 1.0 µg/ml

Host: Rabbit; Target Name: FAM167A; Sample
 Tissue: U937 Whole Cell lysates; Antibody
 Dilution: 1.0 µg/ml