

Product datasheet for **TA343219**

DPEP2 Rabbit Polyclonal Antibody

Product data:

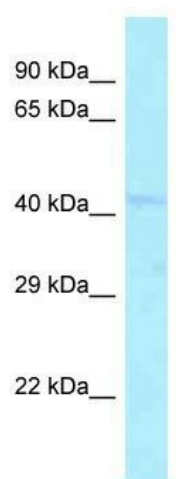
Product Type:	Primary Antibodies
Applications:	WB
Recommended Dilution:	WB
Reactivity:	Human
Host:	Rabbit
Isotype:	IgG
Clonality:	Polyclonal
Immunogen:	The immunogen for anti-DPEP2 antibody is: synthetic peptide directed towards the C-terminal region of Human DPEP2. Synthetic peptide located within the following region: VFRQVEKVQEENKWQSPLEDKFPDEQLSSSCHSDLSRLRQRQSLTSGQEL
Formulation:	Liquid. Purified antibody supplied in 1x PBS buffer with 0.09% (w/v) sodium azide and 2% sucrose. <i>Note that this product is shipped as lyophilized powder to China customers.</i>
Purification:	Affinity Purified
Conjugation:	Unconjugated
Storage:	Store at -20°C as received.
Stability:	Stable for 12 months from date of receipt.
Predicted Protein Size:	43 kDa
Gene Name:	dipeptidase 2
Database Link:	NP_071750 Entrez Gene 64174 Human Q9H4A9
Background:	DPEP2 belongs to the membrane-bound dipeptidase (EC 3.4.13.19) family. These enzymes hydrolyze a variety of dipeptides, including leukotriene D4, the beta-lactam ring of some antibiotics, and cystinyl-bis-glycine (cys-bis-gly) formed during glutathione degradation.
Synonyms:	MBD2
Note:	Immunogen Sequence Homology: Human: 100%; Rabbit: 86%; Rat: 79%



[View online »](#)

Protein Families: Druggable Genome, Protease

Product images:



Host: Rabbit; Target Name: DPEP2; Sample Tissue: OVCAR-3 Whole Cell lysates; Antibody Dilution: 1.0 ug/ml DPEP2 is supported by BioGPS gene expression data to be expressed in OVCAR3