

Product datasheet for **TA343217**

Calneuron 1 (CALN1) Rabbit Polyclonal Antibody

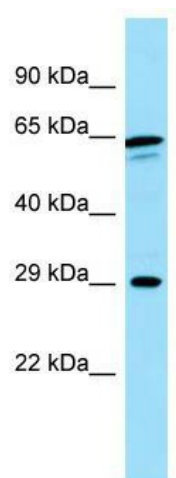
Product data:

Product Type:	Primary Antibodies
Applications:	WB
Recommended Dilution:	WB
Reactivity:	Human
Host:	Rabbit
Isotype:	IgG
Clonality:	Polyclonal
Immunogen:	The immunogen for anti-CALN1 antibody is: synthetic peptide directed towards the N-terminal region of Human CALN1. Synthetic peptide located within the following region: PGEGKPENEEKKGGALGGGEEPPRSQAPDFPTWEKMPFHHVTAGLLYKG
Formulation:	Liquid. Purified antibody supplied in 1x PBS buffer with 0.09% (w/v) sodium azide and 2% sucrose.
Conjugation:	Unconjugated
Storage:	Store at -20°C as received.
Stability:	Stable for 12 months from date of receipt.
Predicted Protein Size:	29 kDa
Gene Name:	calneuron 1
Database Link:	NP_113656 Entrez Gene 83698 Human Q9BXU9
Background:	This gene encodes a protein with high similarity to the calcium-binding proteins of the calmodulin family. The encoded protein contains two EF-hand domains and potential calcium-binding sites. Alternative splicing results in multiple transcript variants.
Synonyms:	CABP8
Note:	Immunogen Sequence Homology: Human: 100%; Pig: 92%; Guinea pig: 92%; Bovine: 91%; Rat: 83%; Mouse: 83%
Protein Families:	Transmembrane



[View online »](#)

Product images:



WB Suggested Anti-CALN1 Antibody; Titration: 1.0 ug/ml; Positive Control: COLO205 Whole Cell