

## Product datasheet for **TA343216**

### NDUFA8 Rabbit Polyclonal Antibody

#### Product data:

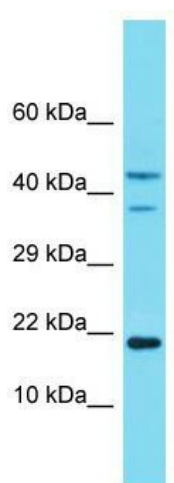
Product Type:	Primary Antibodies
Applications:	WB
Recommended Dilution:	WB
Reactivity:	Mouse
Host:	Rabbit
Isotype:	IgG
Clonality:	Polyclonal
Immunogen:	The immunogen for anti-Ndufa8 antibody is: synthetic peptide directed towards the middle region of Mouse Ndufa8. Synthetic peptide located within the following region: KEFMPCRWEEKDPRRCLKEGKLVNGCALNFFRQIKSHCAEPFTEYWTCLD
Formulation:	Liquid. Purified antibody supplied in 1x PBS buffer with 0.09% (w/v) sodium azide and 2% sucrose. <i>Note that this product is shipped as lyophilized powder to China customers.</i>
Conjugation:	Unconjugated
Storage:	Store at -20°C as received.
Stability:	Stable for 12 months from date of receipt.
Predicted Protein Size:	20 kDa
Gene Name:	NADH:ubiquinone oxidoreductase subunit A8
Database Link:	<a href="#">NP_055037</a> <a href="#">Entrez Gene 68375 Mouse P51970</a>
Background:	Accessory subunit of the mitochondrial membrane respiratory chain NADH dehydrogenase (Complex I), that is believed not to be involved in catalysis. Complex I functions in the transfer of electrons from NADH to the respiratory chain. The immediate electron acceptor for the enzyme is believed to be ubiquinone.
Synonyms:	CI-19KD; CI-PGIV; PGIV
Note:	Immunogen Sequence Homology: Dog: 100%; Pig: 100%; Rat: 100%; Horse: 100%; Human: 100%; Bovine: 100%; Rabbit: 100%; Guinea pig: 100%; Mouse: 93%; Zebrafish: 92%



[View online »](#)

**Protein Pathways:** Alzheimer's disease, Huntington's disease, Metabolic pathways, Oxidative phosphorylation, Parkinson's disease

**Product images:**



Host: Rabbit; Target Name: Ndufa8; Sample  
Tissue: Mouse Thymus lysates; Antibody Dilution:  
1.0 ug/ml