

## Product datasheet for **TA343214**

### PSCDBP (CYTIP) Rabbit Polyclonal Antibody

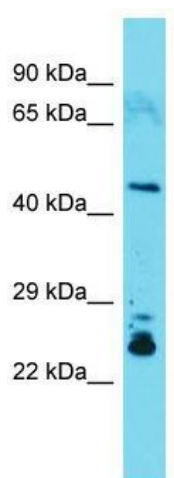
#### Product data:

Product Type:	Primary Antibodies
Applications:	WB
Recommended Dilution:	WB
Reactivity:	Mouse
Host:	Rabbit
Isotype:	IgG
Clonality:	Polyclonal
Immunogen:	The immunogen for anti-Cytip antibody is: synthetic peptide directed towards the C-terminal region of Mouse Cytip. Synthetic peptide located within the following region: RNRSISVTSSGSFSPLWESNYSSVFGTLPRKSRRGSRKQILKFIPGLHR
Formulation:	Liquid. Purified antibody supplied in 1x PBS buffer with 0.09% (w/v) sodium azide and 2% sucrose. <i>Note that this product is shipped as lyophilized powder to China customers.</i>
Conjugation:	Unconjugated
Storage:	Store at -20°C as received.
Stability:	Stable for 12 months from date of receipt.
Predicted Protein Size:	40 kDa
Gene Name:	cytohesin 1 interacting protein
Database Link:	<a href="#">NP_004279</a> <a href="#">Entrez Gene 227929 Mouse</a> <a href="#">O60759</a>
Background:	By its binding to cytohesin-1 (CYTH1), Cytip modifies activation of ARFs by CYTH1 and its precise function may be to sequester CYTH1 in the cytoplasm.
Synonyms:	B3-1; CASP; CYBR; CYTHIP; HE; PSCDBP
Note:	Immunogen Sequence Homology: Pig: 100%; Human: 100%; Guinea pig: 100%; Rat: 93%; Horse: 93%; Mouse: 93%; Bovine: 93%; Rabbit: 93%; Dog: 86%; Zebrafish: 86%



[View online »](#)

**Product images:**



Host: Rabbit; Target Name: Cytip; Sample Tissue: Mouse Heart lysates; Antibody Dilution: 1.0 ug/ml