

Product datasheet for **TA343213**

FUCA2 Rabbit Polyclonal Antibody

Product data:

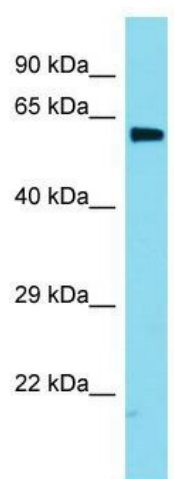
Product Type:	Primary Antibodies
Applications:	WB
Recommended Dilution:	WB
Reactivity:	Mouse
Host:	Rabbit
Isotype:	IgG
Clonality:	Polyclonal
Immunogen:	The immunogen for anti-Fuca2 antibody is: synthetic peptide directed towards the middle region of Mouse Fuca2. Synthetic peptide located within the following region: SKTLPELYELVNRYPQPEVLWSDGGGAPDHYWNSTGFLAWLYNESPVRKT
Formulation:	Liquid. Purified antibody supplied in 1x PBS buffer with 0.09% (w/v) sodium azide and 2% sucrose. <i>Note that this product is shipped as lyophilized powder to China customers.</i>
Conjugation:	Unconjugated
Storage:	Store at -20°C as received.
Stability:	Stable for 12 months from date of receipt.
Predicted Protein Size:	54 kDa
Gene Name:	fucosidase, alpha-L- 2, plasma
Database Link:	NP_114409 Entrez Gene 66848 Mouse Q9BTY2
Background:	Alpha-L-fucosidase is responsible for hydrolyzing the alpha-1,6-linked fucose joined to the reducing-end N-acetylglucosamine of the carbohydrate moieties of glycoproteins.
Synonyms:	dJ20N2.5
Note:	Immunogen Sequence Homology: Rat: 100%; Human: 100%; Mouse: 93%; Pig: 92%; Horse: 92%; Bovine: 92%; Zebrafish: 92%; Guinea pig: 92%; Dog
Protein Families:	Druggable Genome, Secreted Protein



[View online »](#)

Protein Pathways: Other glycan degradation

Product images:



Host: Rabbit; Target Name: Fuca2; Sample Tissue: Mouse Heart lysates; Antibody Dilution: 1.0 ug/ml