

## Product datasheet for **TA343212**

### DEPTOR Rabbit Polyclonal Antibody

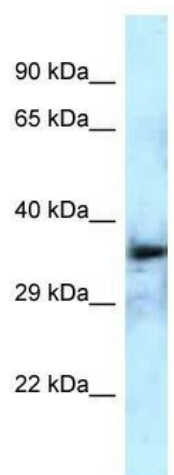
#### Product data:

Product Type:	Primary Antibodies
Applications:	WB
Recommended Dilution:	WB
Reactivity:	Human
Host:	Rabbit
Isotype:	IgG
Clonality:	Polyclonal
Immunogen:	The immunogen for anti-DEPTOR antibody is: synthetic peptide directed towards the middle region of Human DEPTOR. Synthetic peptide located within the following region: KSPSSQETHDSPFCLRKQSHDNRKSTSFMSVSPSKEIKIVSAVRRSSMSS
Formulation:	Liquid. Purified antibody supplied in 1x PBS buffer with 0.09% (w/v) sodium azide and 2% sucrose. <i>Note that this product is shipped as lyophilized powder to China customers.</i>
Purification:	Affinity Purified
Conjugation:	Unconjugated
Storage:	Store at -20°C as received.
Stability:	Stable for 12 months from date of receipt.
Predicted Protein Size:	33 kDa
Gene Name:	DEP domain containing MTOR-interacting protein
Database Link:	<a href="#">NP_073620</a> <a href="#">Entrez Gene 64798 Human</a> <a href="#">Q8TB45</a>
Background:	The function of this protein remains unknown.
Synonyms:	DEP.6; DEPDC6
Note:	Immunogen Sequence Homology: Dog: 100%; Pig: 100%; Rat: 100%; Horse: 100%; Human: 100%; Rabbit: 100%; Mouse: 93%; Bovine: 86%; Guinea pig



[View online »](#)

## Product images:



Host: Rabbit; Target Name: DEPTOR; Sample  
Tissue: Fetal Brain lysates; Antibody Dilution: 1.0  
ug/ml