

## Product datasheet for **TA343211**

### COL21A1 Rabbit Polyclonal Antibody

#### Product data:

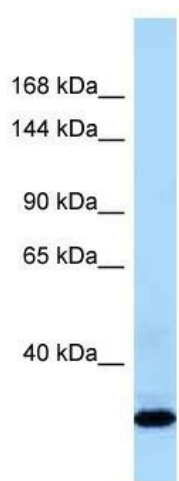
Product Type:	Primary Antibodies
Applications:	WB
Recommended Dilution:	WB
Reactivity:	Human
Host:	Rabbit
Isotype:	IgG
Clonality:	Polyclonal
Immunogen:	The immunogen for anti-COL21A1 antibody is: synthetic peptide directed towards the C-terminal region of Human COL21A1. Synthetic peptide located within the following region: PGEPGYMGLPGIQGKKGDKNQGEKGIQGQKGENGRQGIPGQQGIQGHG
Formulation:	Liquid. Purified antibody supplied in 1x PBS buffer with 0.09% (w/v) sodium azide and 2% sucrose. <i>Note that this product is shipped as lyophilized powder to China customers.</i>
Purification:	Affinity Purified
Conjugation:	Unconjugated
Storage:	Store at -20°C as received.
Stability:	Stable for 12 months from date of receipt.
Predicted Protein Size:	35 kDa
Gene Name:	collagen type XXI alpha 1 chain
Database Link:	<a href="#">NP_110447</a> <a href="#">Entrez Gene 81578 Human</a> <a href="#">Q96P44</a>
Background:	This gene encodes the alpha chain of type XXI collagen, a member of the FACIT collagen family (fibril-associated collagens with interrupted helices). Type XXI collagen is localized to tissues containing type I collagen so, like other members of this collagen family, it may serve to maintain the integrity of the extracellular matrix. An alternatively spliced transcript variant has been described, but its full-length nature has yet to be determined.
Synonyms:	COLA1L; dj682j15.1; dj708f5.1; FP633



[View online »](#)

**Note:** Immunogen Sequence Homology: Pig: 100%; Horse: 100%; Human: 100%; Dog: 93%

**Product images:**



Host: Rabbit; Target Name: COL21A1; Sample  
Tissue: Fetal Liver lysates; Antibody Dilution: 1.0  
ug/ml