

Product datasheet for **TA343210**

AMMECR1 Rabbit Polyclonal Antibody

Product data:

Product Type:	Primary Antibodies
Applications:	WB
Recommended Dilution:	WB
Reactivity:	Human
Host:	Rabbit
Isotype:	IgG
Clonality:	Polyclonal
Immunogen:	The immunogen for anti-AMMECR1 antibody is: synthetic peptide directed towards the C-terminal region of Human AMMECR1. Synthetic peptide located within the following region: DHIQTIDSLLRKGGYKAPITNEFRKTIKLTRYRSEKMTLSYAEYLAHRQH
Formulation:	Liquid. Purified antibody supplied in 1x PBS buffer with 0.09% (w/v) sodium azide and 2% sucrose. <i>Note that this product is shipped as lyophilized powder to China customers.</i>
Conjugation:	Unconjugated
Storage:	Store at -20°C as received.
Stability:	Stable for 12 months from date of receipt.
Predicted Protein Size:	31 kDa
Gene Name:	Alport syndrome, mental retardation, midface hypoplasia and elliptocytosis chromosomal region gene 1
Database Link:	NP_001020751 Entrez Gene 9949 Human Q9Y4X0
Background:	The exact function of this gene is not known, however, submicroscopic deletion of the X chromosome including this gene, COL4A5, and FACL4 genes, result in a contiguous gene deletion syndrome, the AMME complex (Alport syndrome, mental retardation, midface hypoplasia, and elliptocytosis). Alternatively spliced transcript variants encoding different isoforms have been found for this gene.
Synonyms:	AMMERC1

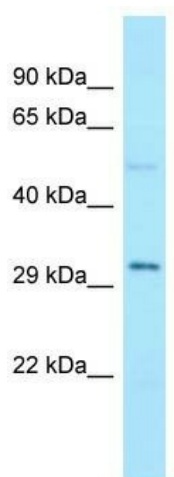


[View online »](#)

Note: Immunogen Sequence Homology: Dog: 100%; Pig: 100%; Rat: 100%; Horse: 100%; Human: 100%; Mouse: 100%; Bovine: 100%; Rabbit: 100%; Zebrafish: 100%; Guinea pig: 100%

Protein Families: Druggable Genome

Product images:



WB Suggested Anti-AMMECR1 Antibody; Titration: 1.0 ug/ml; Positive Control: Fetal Lung