

## Product datasheet for TA343209

### Kifbp Rabbit Polyclonal Antibody

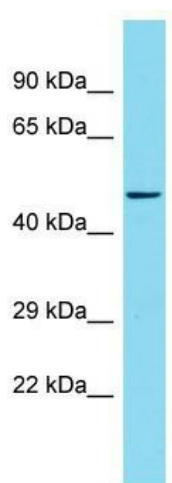
#### Product data:

<b>Product Type:</b>	Primary Antibodies
<b>Applications:</b>	WB
<b>Recommended Dilution:</b>	WB
<b>Reactivity:</b>	Mouse
<b>Host:</b>	Rabbit
<b>Isotype:</b>	IgG
<b>Clonality:</b>	Polyclonal
<b>Immunogen:</b>	The immunogen for anti-Kbp antibody is: synthetic peptide directed towards the N-terminal region of Mouse Kbp. Synthetic peptide located within the following region: RVELHKNPEKEPYKSKYGARALLEEVALLGPAPEDDEPAADDGPGDQA
<b>Formulation:</b>	Liquid. Purified antibody supplied in 1x PBS buffer with 0.09% (w/v) sodium azide and 2% sucrose.
<b>Purification:</b>	Affinity Purified
<b>Conjugation:</b>	Unconjugated
<b>Storage:</b>	Store at -20°C as received.
<b>Stability:</b>	Stable for 12 months from date of receipt.
<b>Predicted Protein Size:</b>	43 kDa
<b>Gene Name:</b>	KIF1 binding protein
<b>Database Link:</b>	<a href="#">NP_082473</a> <a href="#">Entrez Gene 72320 Mouse</a> <a href="#">Q6ZPU9</a>
<b>Background:</b>	Kbp is required for organization of axonal microtubules, and axonal outgrowth and maintenance during peripheral and central nervous system development. It regulates mitochondrial transport by modulating KIF1B motor activity.



**Note:** Immunogen Sequence Homology: Dog: 100%; Pig: 100%; Rat: 100%; Horse: 100%; Human: 100%;  
Mouse: 100%; Bovine: 100%; Rabbit: 100%; Guinea pig: 100%

**Product images:**



Host: Rabbit; Target Name: Kbp; Sample  
Tissue: Mouse Thymus lysates; Antibody  
Dilution: 1.0 ug/ml