

Product datasheet for **TA343207**

MIRO2 (RHOT2) Rabbit Polyclonal Antibody

Product data:

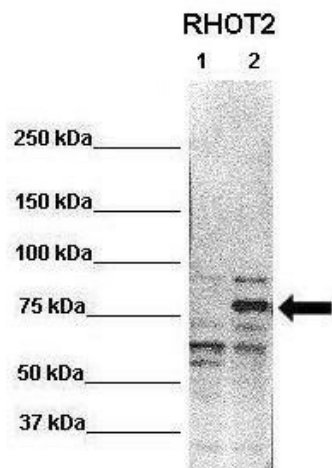
Product Type:	Primary Antibodies
Applications:	WB
Recommended Dilution:	WB
Reactivity:	Human
Host:	Rabbit
Isotype:	IgG
Clonality:	Polyclonal
Immunogen:	The immunogen for anti-RHOT2 antibody is: synthetic peptide directed towards the N-terminal region of Human RHOT2. Synthetic peptide located within the following region: TIPADVTPEKVPHTHVDYSEAEQTDEELREEIHKANVVCVVYDVSEATI
Formulation:	Liquid. Purified antibody supplied in 1x PBS buffer with 0.09% (w/v) sodium azide and 2% sucrose. <i>Note that this product is shipped as lyophilized powder to China customers.</i>
Purification:	Affinity Purified
Conjugation:	Unconjugated
Storage:	Store at -20°C as received.
Stability:	Stable for 12 months from date of receipt.
Predicted Protein Size:	67 kDa
Gene Name:	ras homolog family member T2
Database Link:	NP_620124 Entrez Gene 89941 Human Q8IXI1
Background:	This gene encodes a member of the Rho family of GTPases. The encoded protein is localized to the outer mitochondrial membrane and plays a role in mitochondrial trafficking and fusion-fission dynamics.
Synonyms:	ARHT2; C16orf39; MIRO-2; MIRO2; RASL
Note:	Immunogen Sequence Homology: Human: 100%; Zebrafish: 91%; Dog: 86%; Rat: 86%; Mouse: 86%; Pig: 79%; Horse: 79%; Guinea pig: 79%



[View online »](#)

Protein Families: Transmembrane

Product images:



WB Suggested Anti-RHOT2 Antibody ; Positive Control: Lane 1: 20ug untransfected HEK293T
Lane 2: 20ug RHOT2 transfected HEK293T;
Primary Antibody Dilution : 1:1000; Secondary Antibody : Anti-rabbit-HRP; Secondary Antibody Dilution : 1:2000; Submitted by: Ji