

## Product datasheet for **TA343206**

### **NPL4 (NPLOC4) Rabbit Polyclonal Antibody**

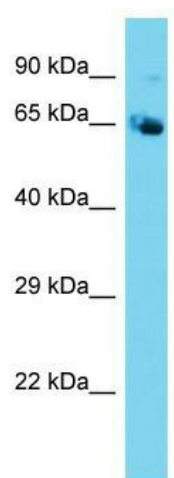
#### **Product data:**

<b>Product Type:</b>	Primary Antibodies
<b>Applications:</b>	WB
<b>Recommended Dilution:</b>	WB
<b>Reactivity:</b>	Mouse
<b>Host:</b>	Rabbit
<b>Isotype:</b>	IgG
<b>Clonality:</b>	Polyclonal
<b>Immunogen:</b>	The immunogen for anti-Nploc4 antibody is: synthetic peptide directed towards the N-terminal region of Mouse Nploc4. Synthetic peptide located within the following region: GLKAFGAPNVEDEIDQYLSKQDGKIYRSRDPQLCRHGPLGKCVHCVPLE
<b>Formulation:</b>	Liquid. Purified antibody supplied in 1x PBS buffer with 0.09% (w/v) sodium azide and 2% sucrose.
<b>Conjugation:</b>	Unconjugated
<b>Storage:</b>	Store at -20°C as received.
<b>Stability:</b>	Stable for 12 months from date of receipt.
<b>Predicted Protein Size:</b>	66 kDa
<b>Gene Name:</b>	NPL4 homolog, ubiquitin recognition factor
<b>Database Link:</b>	<a href="#">NP_060391</a> <a href="#">Entrez Gene 217365 Mouse</a> <a href="#">Q8TAT6</a>
<b>Background:</b>	The ternary complex containing UFD1L, VCP and NPLOC4 binds ubiquitinated proteins and is necessary for the export of misfolded proteins from the ER to the cytoplasm, where they are degraded by the proteasome. The NPLOC4-UFD1L-VCP complex regulates spindle disassembly at the end of mitosis and is necessary for the formation of a closed nuclear envelope.
<b>Synonyms:</b>	NPL4
<b>Note:</b>	Immunogen Sequence Homology: Dog: 100%; Pig: 100%; Rat: 100%; Horse: 100%; Human: 100%; Mouse: 100%; Guinea pig: 100%; Bovine: 93%; Rabbit: 93%; Zebrafish: 86%



[View online »](#)

## Product images:



Host: Rabbit; Target Name: Nploc4; Sample  
Tissue: Mouse Testis lysates; Antibody Dilution:  
1.0 ug/ml