

## Product datasheet for **TA343205**

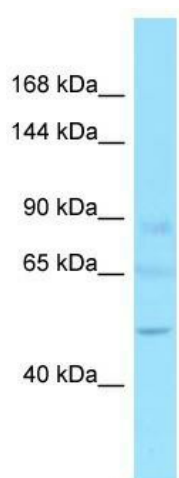
### GTF2IRD2 Rabbit Polyclonal Antibody

#### Product data:

Product Type:	Primary Antibodies
Applications:	WB
Recommended Dilution:	WB
Reactivity:	Human
Host:	Rabbit
Isotype:	IgG
Clonality:	Polyclonal
Immunogen:	The immunogen for anti-GTF2IRD2 antibody is: synthetic peptide directed towards the C-terminal region of Human GTF2IRD2. Synthetic peptide located within the following region: PLVPSEEPNEDPEAEVKIEGNTNSSSVTNSAAGVEDLNIVQVTPDNEKE
Formulation:	Liquid. Purified antibody supplied in 1x PBS buffer with 0.09% (w/v) sodium azide and 2% sucrose. <i>Note that this product is shipped as lyophilized powder to China customers.</i>
Purification:	Affinity Purified
Conjugation:	Unconjugated
Storage:	Store at -20°C as received.
Stability:	Stable for 12 months from date of receipt.
Predicted Protein Size:	48 kDa
Gene Name:	GTF2I repeat domain containing 2
Database Link:	<a href="#">NP_775808</a> <a href="#">Entrez Gene 84163 Human</a> <a href="#">Q86UP8</a>
Background:	The function of this protein remains unknown.
Synonyms:	FP630; GTF2IRD2 alpha; GTF2IRD2A
Note:	Immunogen Sequence Homology: Human: 100%; Bovine: 79%
Protein Families:	Transcription Factors



[View online »](#)

**Product images:**

Host: Rabbit; Target Name: GTF2IRD2; Sample  
Tissue: 721\_B Whole Cell lysates; Antibody  
Dilution: 1.0 ug/ml